



CCM Electronic Engineering

Præsentation af:

- **Systemlink**
- **Skyline kommunikation**
- **LabVIEW NXG**

Kamera vision systemer

- Udmåling af mekaniske emner
- Test af displays
- Kontrol af bearbejdning
- Belysning / valg af optik
- Tilhørende fixering / Sortering
- Brugervenlig parametrering



LabVIEW Software udvikling

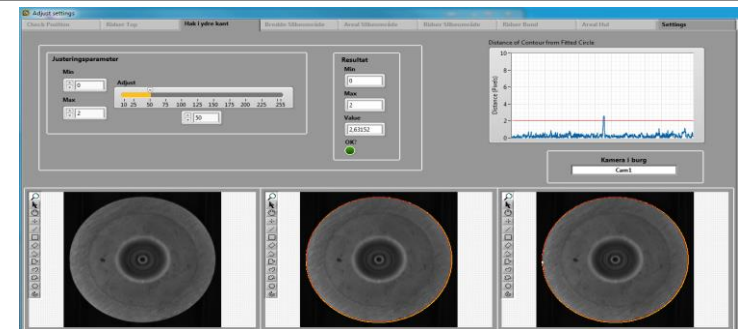
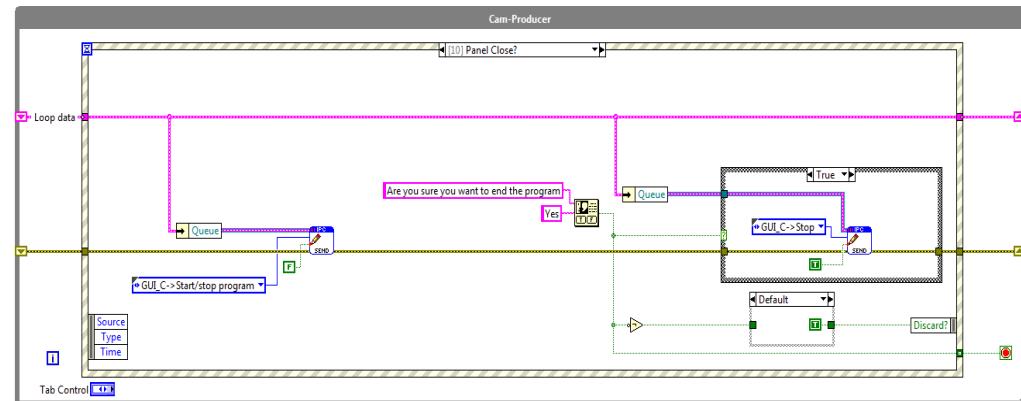
Tryghed

- National Instruments Alliance partner
- Certificerede software udviklere
- Certificeret udvikling af arkitektur

Kompetencer

- LabVIEW RT for deterministisk afvikling af software
- LabVIEW FPGA for deterministisk software afvikling
- LabVIEW Vision development module
- NI TestStand for struktureret testafvikling
- NI HMI og Touchpanel software
- Digital signalbehandling
- LabVIEW NXG for web baseret labview software ([link](#))

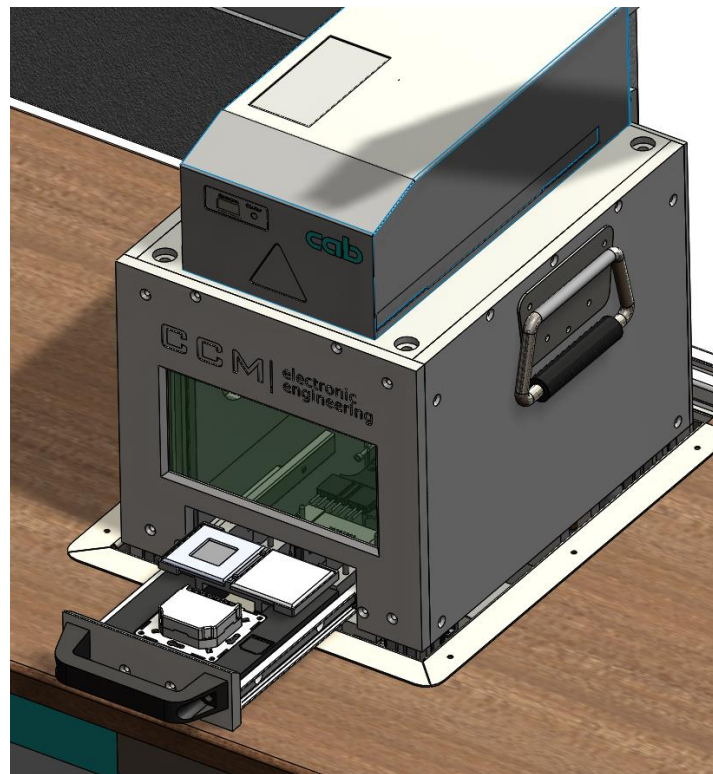
(virker bedst i chrome)



Elektronik tester med laser gravering

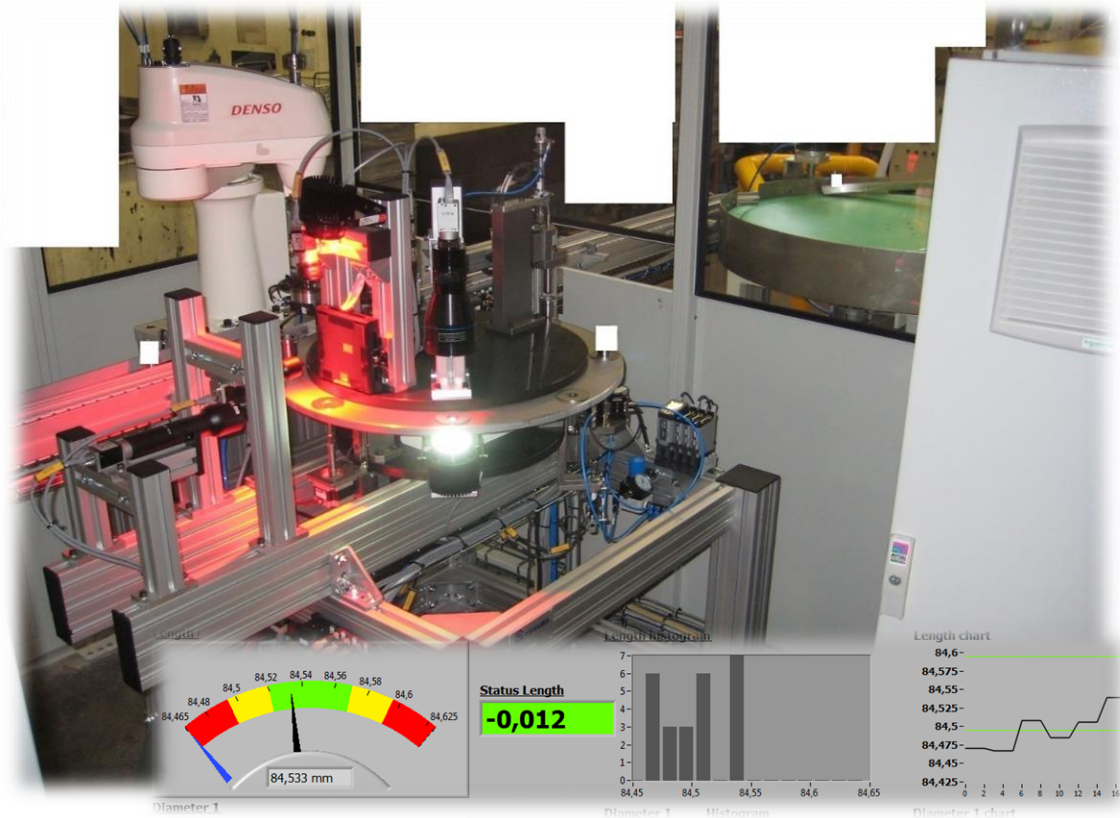
- Test af elektronik undersamlinger
- Lasergravering af plast og metalemner
- Vision kvalitets kontrol af gravering
- Vision kontrol af LCD display
- Graveres og testes parallelt

[Video af system](#)



Automatisk sortering

- AMETEK Solartron måleprober, 1 μ m nøjagtighed
- Vision, til detektion af defekter og urenheder
- Repeterbarhed
- Lang levetid
- Realtime visning af statistik
- Data integreres i eksisterende kvalitets system
- Kapacitet (eks.) = 5 sek. takttid
- [Video](#)





LabVIEW NXG

- LabVIEW NXG Web based applications
- Kan compiles til web sider



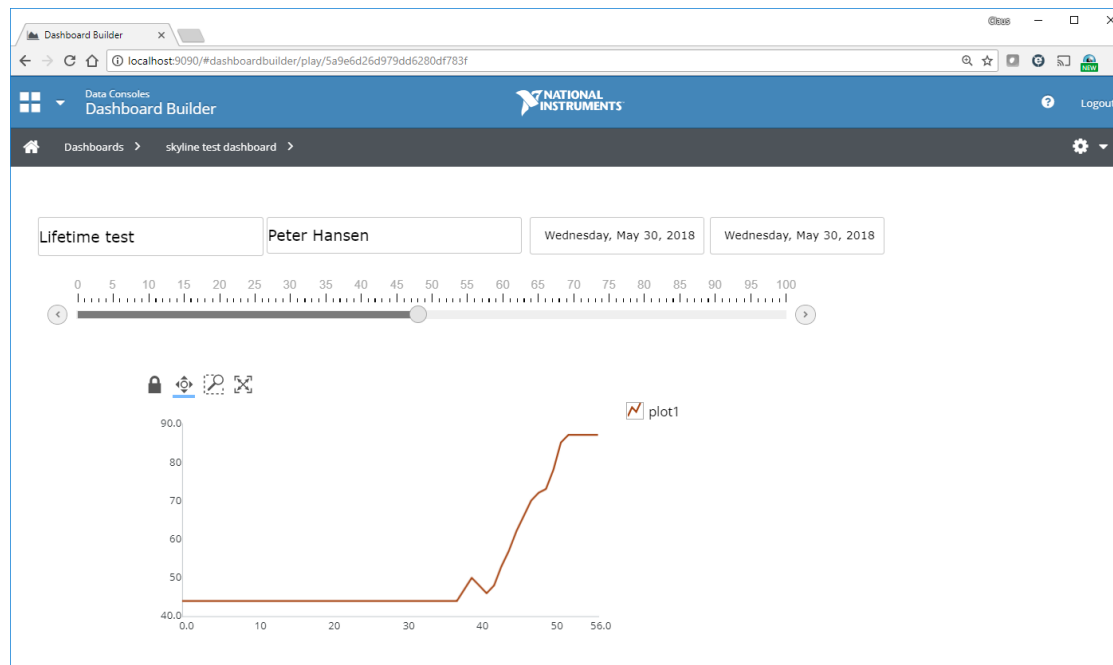
Systemlink

- Skyline variables (Tags and messages)
- Remote software installation on already deployed systems
- Dashboards

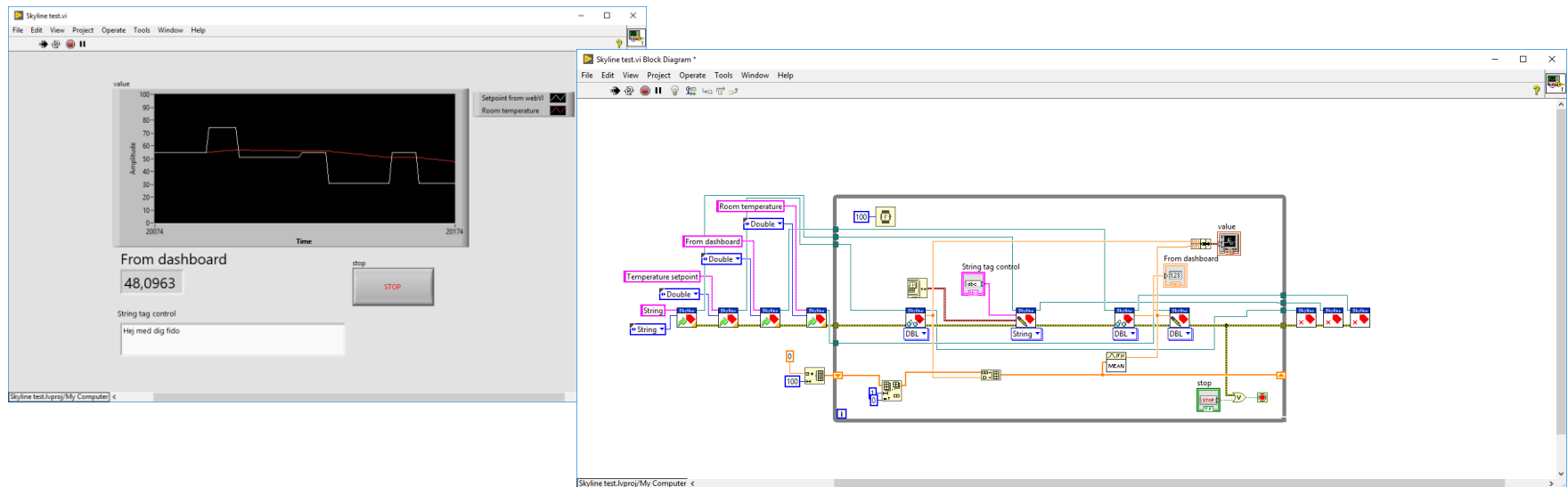
Demo

- **Systemlink dashboard, easy way of creating an overview, or control a process**
- **Integration of labVIEW 2017 VIs**
- **Integration of LabVIEW NXG WebVIs**

Demo dashboard



Demo LV2017 Application, using skyline



Demo LabVIEW NXG WebVI

The image displays the LabVIEW NXG WebVI development environment on the left and the resulting web application running in a browser on the right.

LabVIEW NXG Development Environment (Left):

- The interface shows a project named "Skyline test web.gvweb" with a "Web Server" tab selected.
- The main workspace contains a LabVIEW block diagram with various controls and indicators, including a "Temperature Setpoint" slider, a "String" input field, and an "Array" indicator.
- The bottom status bar shows a table of build results:

Status	Name	Type	Build	Build server	Duration
Failed	HTTP Test Web Server	Web Application	HTTP Test	localhost	00:00:00
Complete	Skyline test web Web Server	Web Application	Skyline test web	localhost	00:00:01

Web Application Runtime (Right):

- The browser window shows the URL: `localhost:51901/HtmlVI/Build/Web%20Server/Interactive/Skyline%20test%20web.gvcomp/Skyline%20test%20web`.
- The application displays a "Temperature Setpoint" slider ranging from 0 to 100.
- Below the slider is a "String" input field containing the text "Hej med dig fido".
- An "Array" indicator is visible at the top, showing a sequence of 16 elements, with the first element highlighted in blue.