



2C is an engineering team specialized in development of high-tech Solutions

2C A/S

**Gl. Lundtoftevej 1
DK - 2800 Lyngby
Denmark**

T +45 70 27 42 00

F +45 70 27 52 00

W www.2c.dk



20 highly skilled engineers in mechanics, optics, electronics and software are ready to serve you in finding the best solution

Established:

1999, 10 years experience in the market

Founder, CEO:

Christian Caspersen

Location:

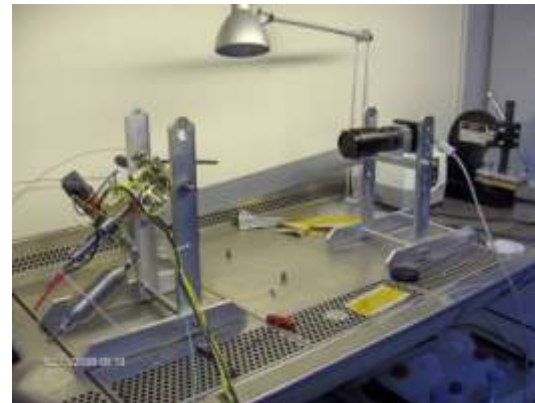
Lyngby, Copenhagen, Denmark
(close to TU of Denmark)

Facilities:

200 m² office, 250 m² lab

Equipment in lab:

A number of small machinery, tools, measuring devices and clean facilities



Test system
in LAF Bench

Problem solving

Analyze problem and design solution

Product Development

From Idea to Product

Test Systems

Design, manufacture and delivery of test complete systems

Production

New production facilities, FAT, SAT, Validation

Project Management

Experienced project managers for hire

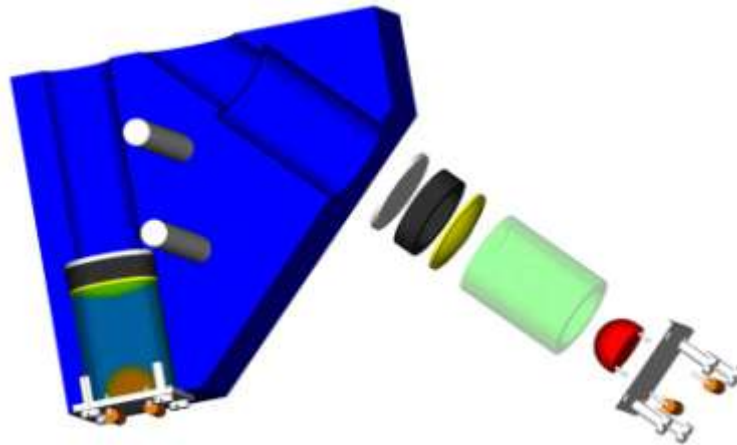
Precision mechanics

- Design of miniature devices for volume production
- Interfacing of technologies
- Plastic precision components
- Material and process knowledge
- DFM for mass production

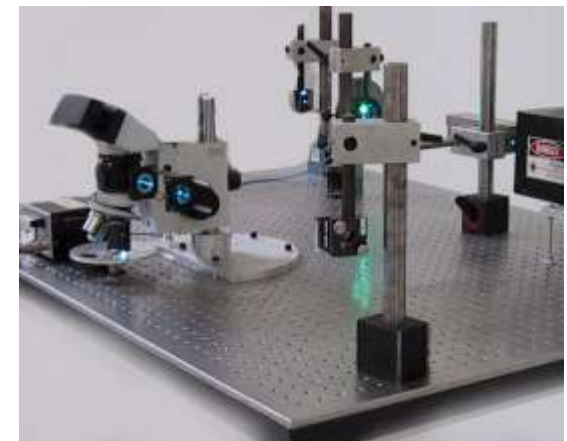


Optical systems

- Laser detection systems
- Vibration analysis
- Image processing systems
- Laser/Doppler-systems
- Measuring equipment
- Compact optical units



Photonics Award 1989



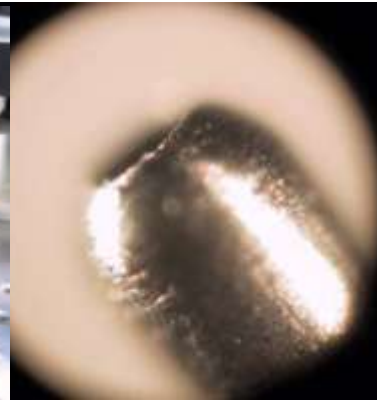
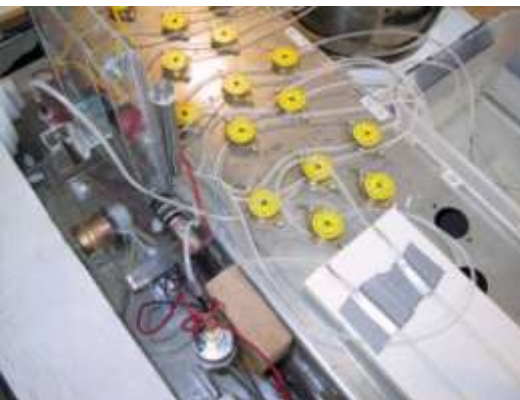
Instrumentation design

- Mechatronic design
- Integration of technologies
- Experimental testing
- **LabVIEW programming**



Micro-flow

- Pump and valve design
- Flow systems
- Dosing systems
- Needle systems



Advanced motion systems

DIRA Award 1998



- Combination of standard and special solutions
- Components and new technologies
- Integration of technologies



User interface design

- Design of mechanic and sw-based systems
- New innovative solutions
- Involving users in the design process

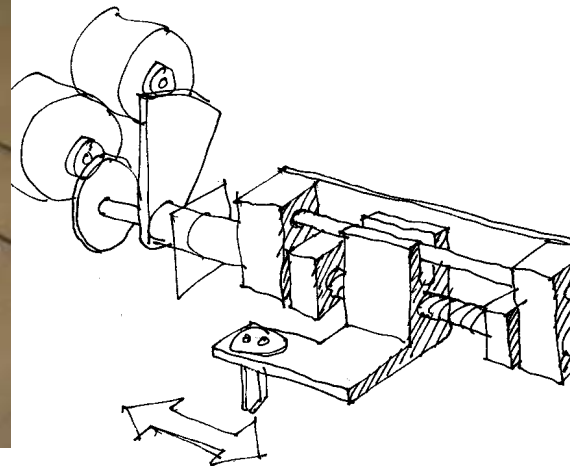
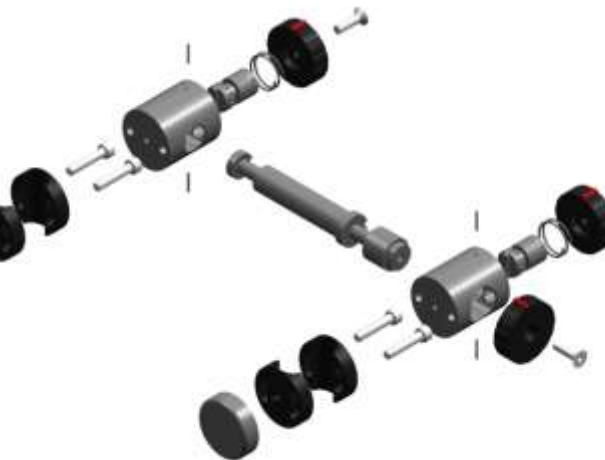


Teknisk Forlag 1998



Documentation, validation and QA

- 3D-CAD in Pro/E and Solid Works
- Rapid prototyping
- Decision proposals and feasibility studies
- Complete project documentations
- Validation on production facilities

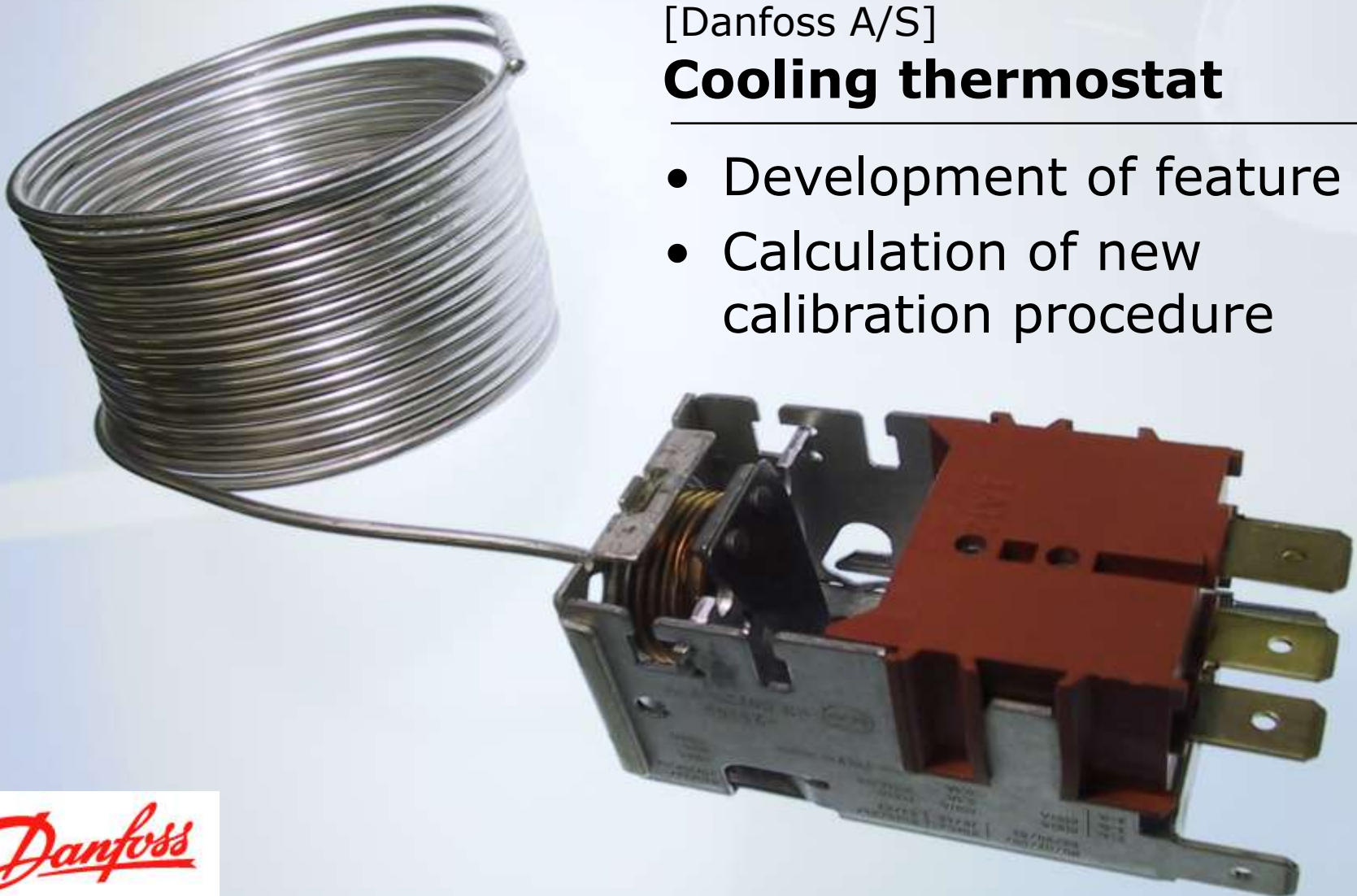




[Danfoss A/S]

Cooling thermostat

- Development of feature
- Calculation of new calibration procedure

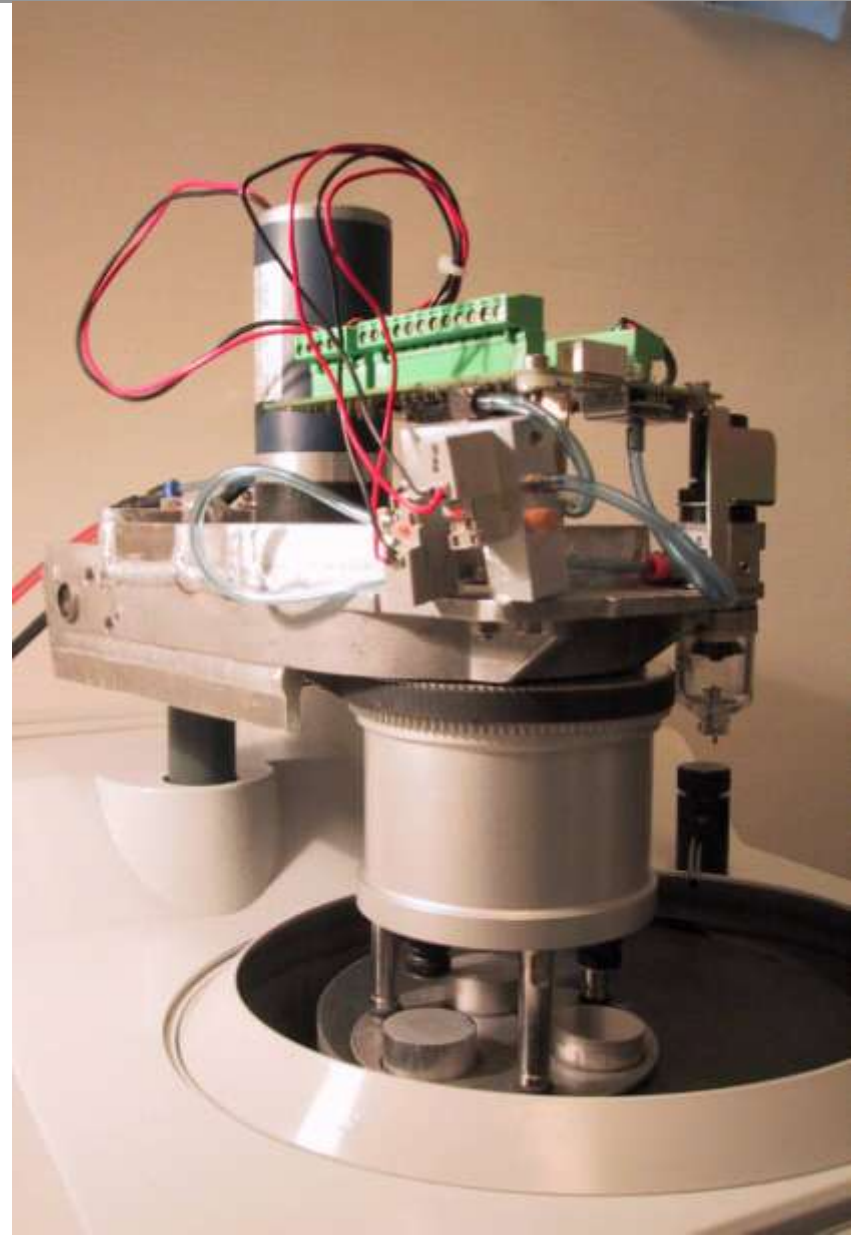


Danfoss

[Struers A/S]

Problem solving

- Calculation of properties
- Redesign
- Test and validation





[Foss Electric A/S]

New device: FoodScan

- Project management
- Mechanical concept
- Short time limit
- New type of cabinet
- Industrial design
- Touch screen MMI



[Novo Nordisk A/S]

New generation insulin pen

- Conceptual design
- Ideas and patents
- Plastic design
- Market research
- Rapid prototyping
- DFM
- Six sigma

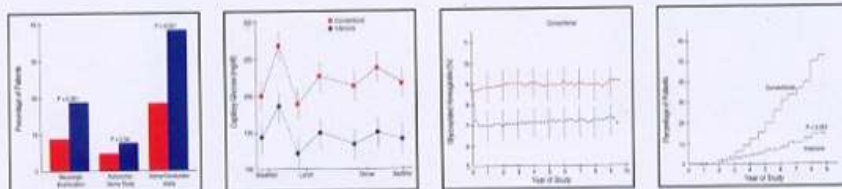


HISTORY (1993~2003)



REFERENCE

Comparison between Conventional treatment and Intensive treatment (Insulin Pump)



(Excerpt: DCCT RESEARCH GROUP) The New England Journal of Medicine 329 : 977-986 September 30, 1993

[Novo Nordisk A/S]

Insulin delivery

- Conceptual design
- Ideas and patents
- Plastic design
- Market research
- Testing and validation





[Novo Nordisk A/S]

NovoSeven Project

- Conceptual design
- Ideas and patents
- Plastic design
- Market research





[Lattec I/S]

New device technology

- Conceptual design
- Mechanical design
- Prototyping
- Experiments
- Cabinet design
- Project management
- **LabVIEW Programming**



[Brunata A/S]

New product design

- Plastic design
- Device layout
- Prototyping
- Testing





[GN Netcom A/S]

Headset optics

- Design of blue lamp
- Optical design by OSLO
- Optical experiments
- Rapid prototyping
- Short term development

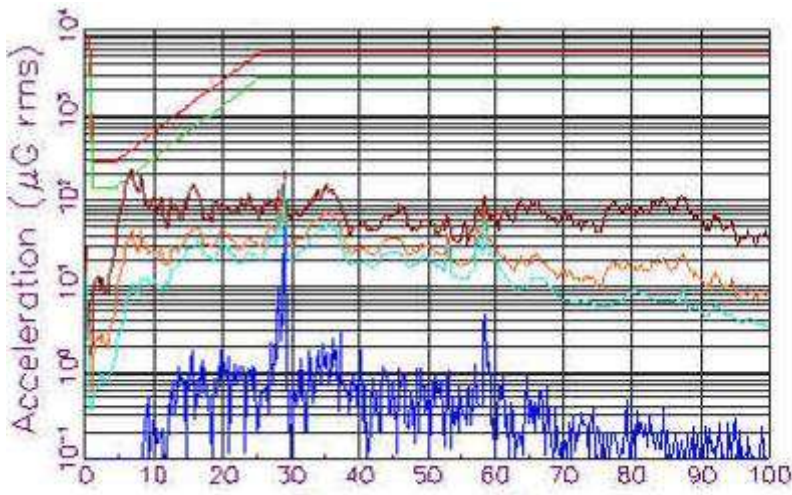




[Danionics A/S]

Lithium-ion battery

- Design of plastic casing
- Solid Works Design
- DFM
- Production run-in
- Design manual



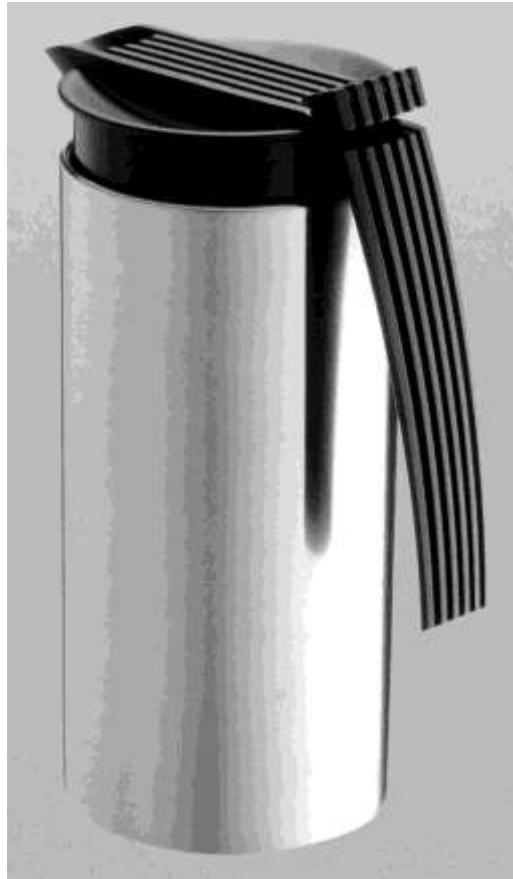
[Brüel & Kjær Vibro A/S]

Vibration monitoring

- Portfolio management
- Project management
- New technology exploitation
- New applications



Brüel & Kjær Vibro



[A/S Stelton]

High vacuum station

- Review
- Redesign of product
- Development of production equipment
- Manufacturing of machine
- Run-in





[Savcor A/S]

Punch vision machine

- Unique design
- Design and manufacturing
- LabVIEW programming
- Production run-in



SAVCOR



[GKN Wheels Nagbøl A/S]

Measuring machine

- From concept to product
- 2C laser optics and standard optical components
- Full automatic handling
- **LabVIEW Programming**
- 2C owns IPR





[Junckers Industrier A/S]

Wood2C

- Detection and sorting of cracks in wooden staves
- IR based vision system
- Image processing
- Embedded Programming
- 2C owns IPR





[GN Otometrics A/S]
Goggle VG40

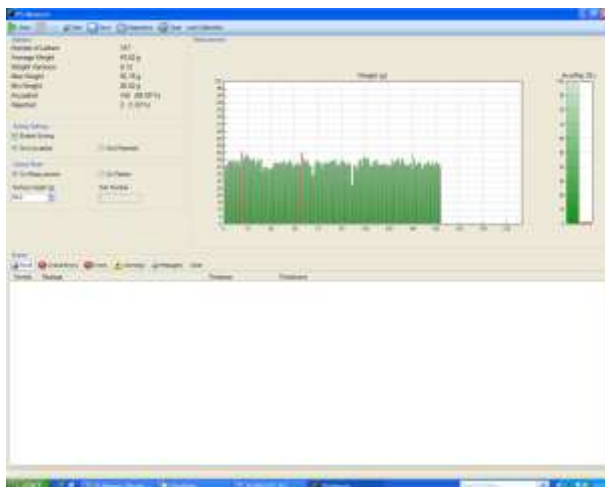
- Project management
- Problem solving
- Subsupplier contact
- Quality control



[IH Postal A/S]

Postal mass measurement

- Speed 10 letters/sec.
- Standard format C5
- Image processing included
- **LabVIEW Programming**
- Embedded Programming



Registration of letters over the weight limit



Detection of Circulating Tumor Cells

[CytoTrack ApS]

Solid state Cytometer

- Functional model
- **LabVIEW programming**
- Laser optics
- Instrumentation
- Testing