



Create a Complete Test Application with Web-Based Reporting Using NI TestStand and WATS in 15 Minutes

Richard Evje Pettersen, NI Days 2009

Technical Manager, Partner

Virinco AS

Established in 1998, Drammen - Norway

Software/hardware development

Test, Measurement and Automation

Software for test data management

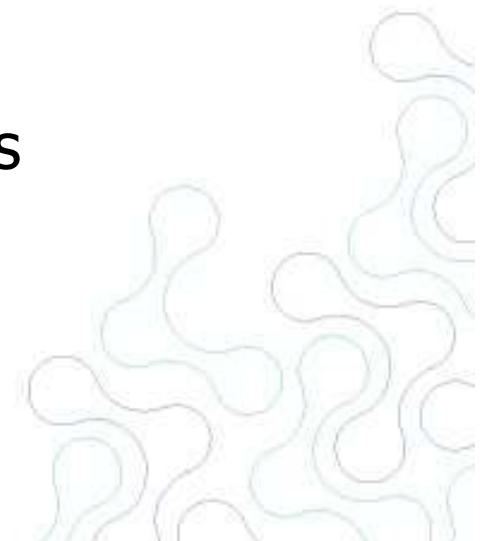
Capture, database storage and presentation

National Instruments & Microsoft Certified Alliance
Partner



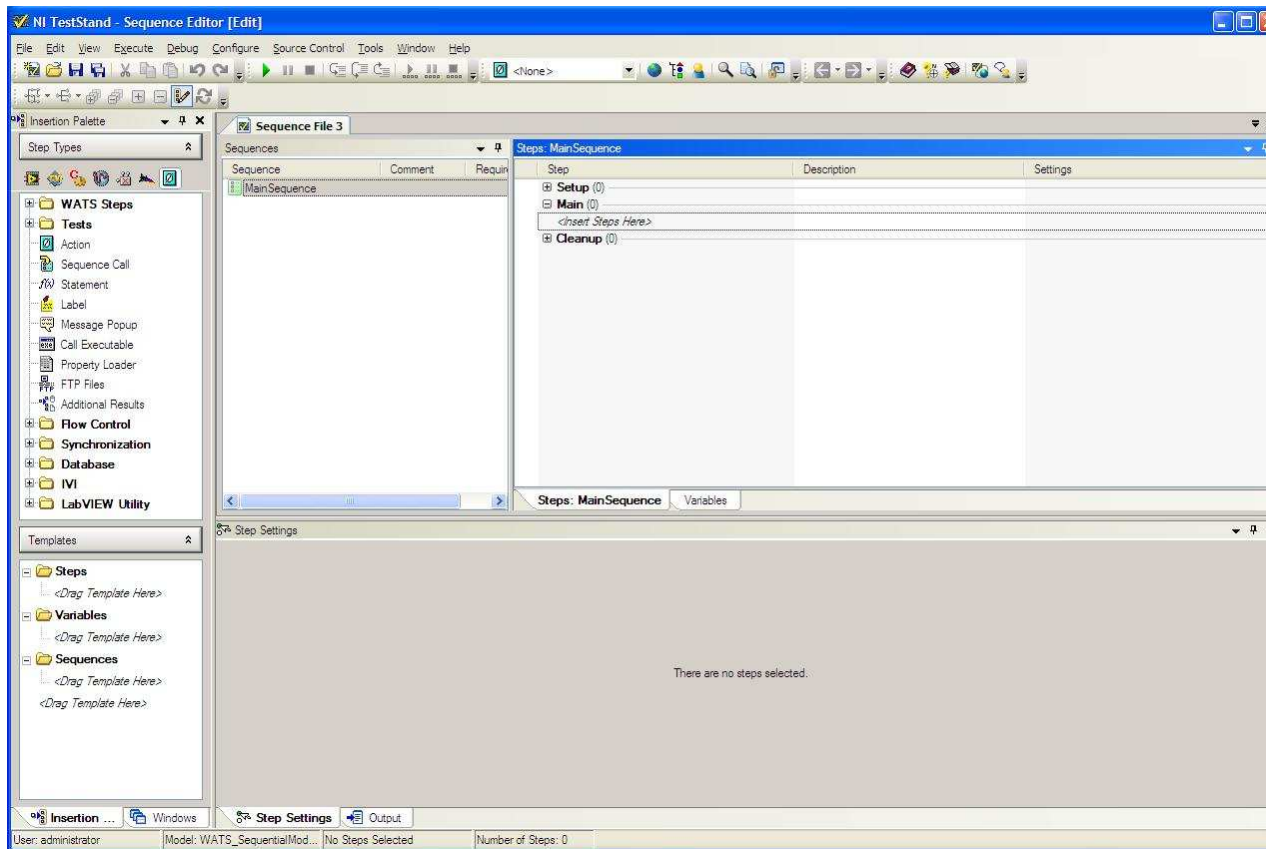
Virinco AS

- Create a test sequence from scratch using TestStand
- Add 4 numeric measurements
 - Environment temp
 - Meas 1V
 - Meas 5V
 - Meas 12V
- Use LabVIEW Express VI's to configure measurements
 - Use NI ENET-9219 4-Channel Universal Input
- Run the test a few times
- Login to WATS and analyse the test results



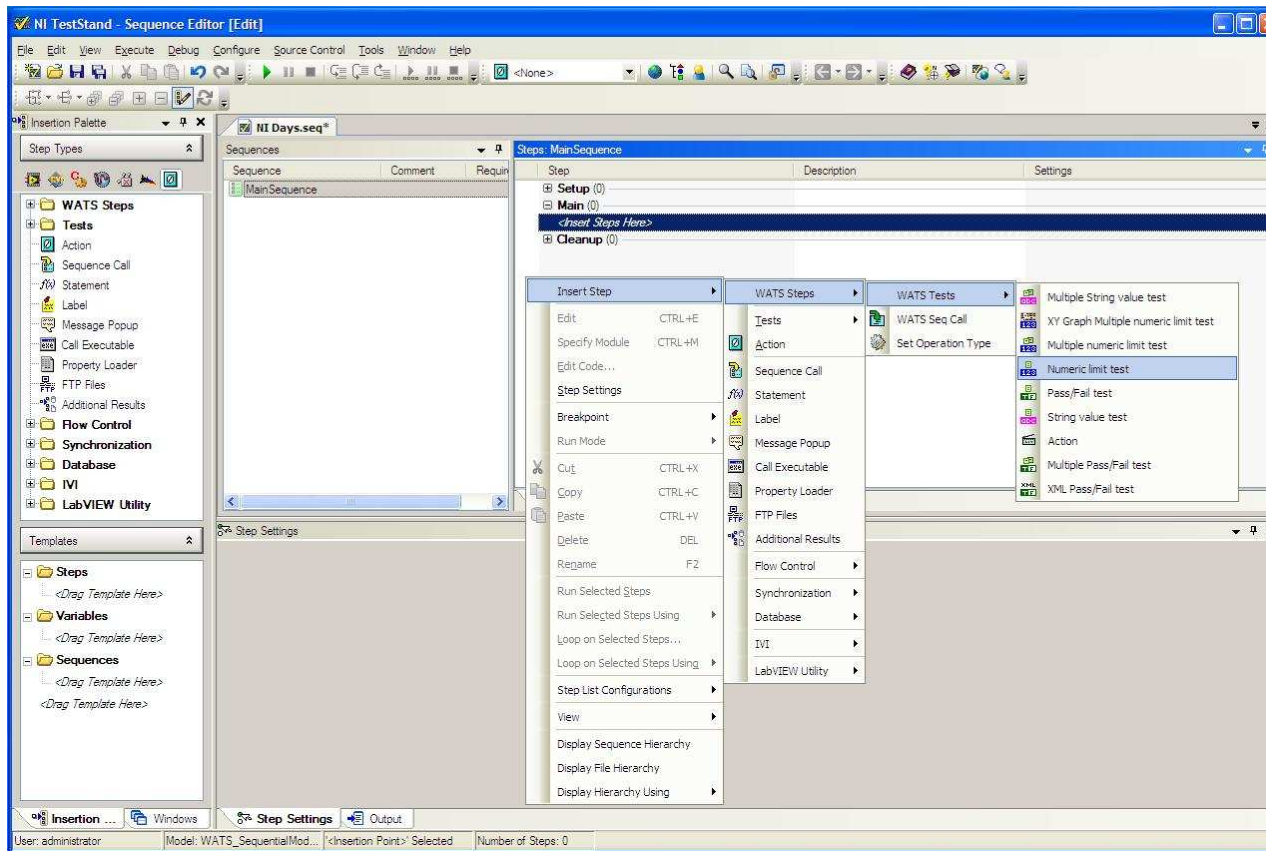
Virinco AS

-Create a test sequence from scratch using TestStand



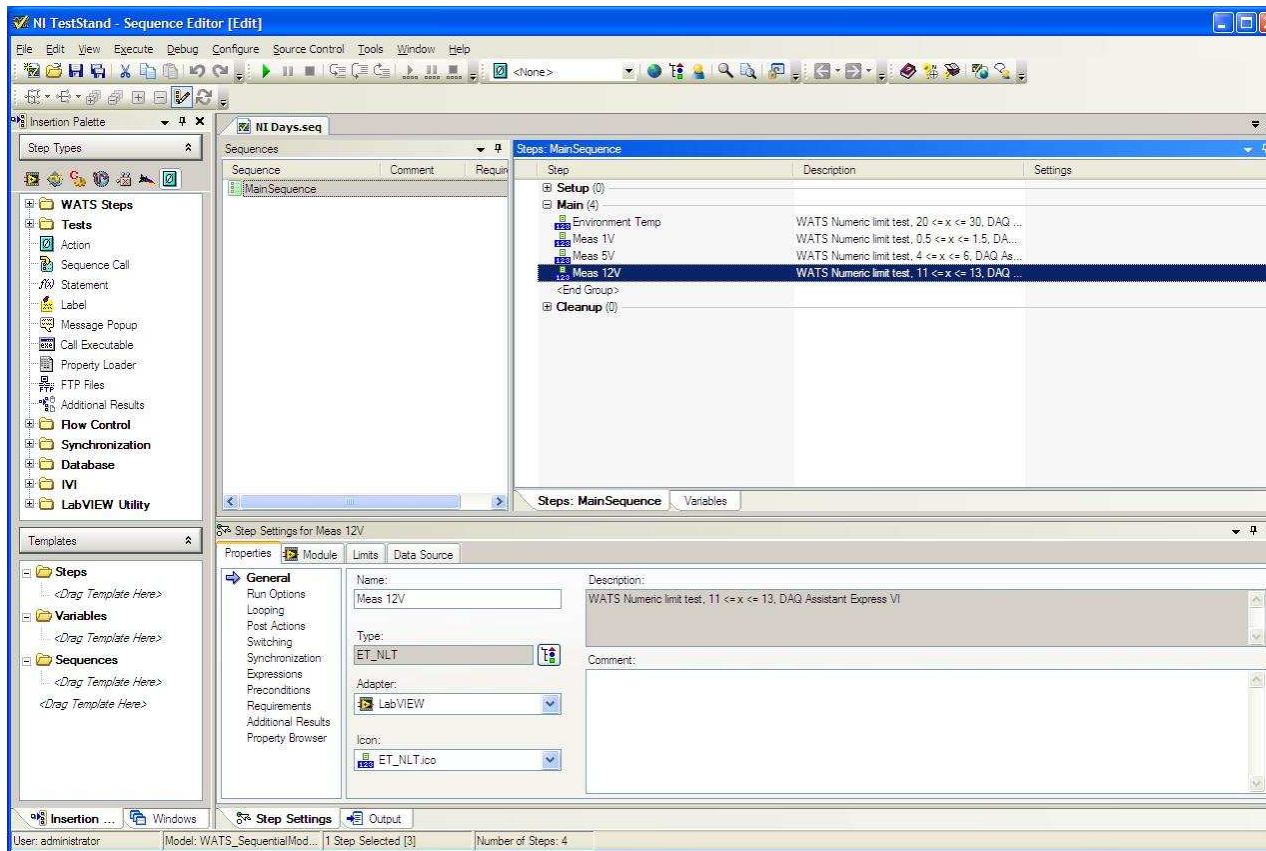
Virinco AS

-Add 4 numeric measurements



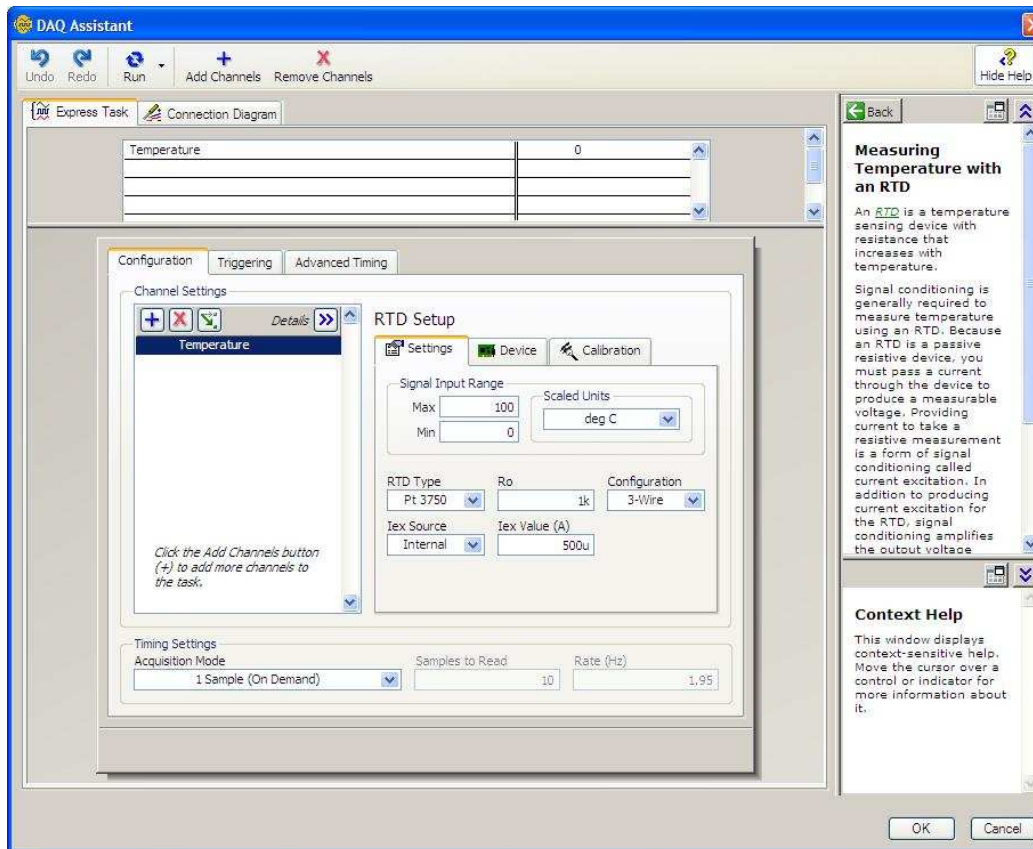
Virinco AS

-Add 4 numeric measurements



Virinco AS

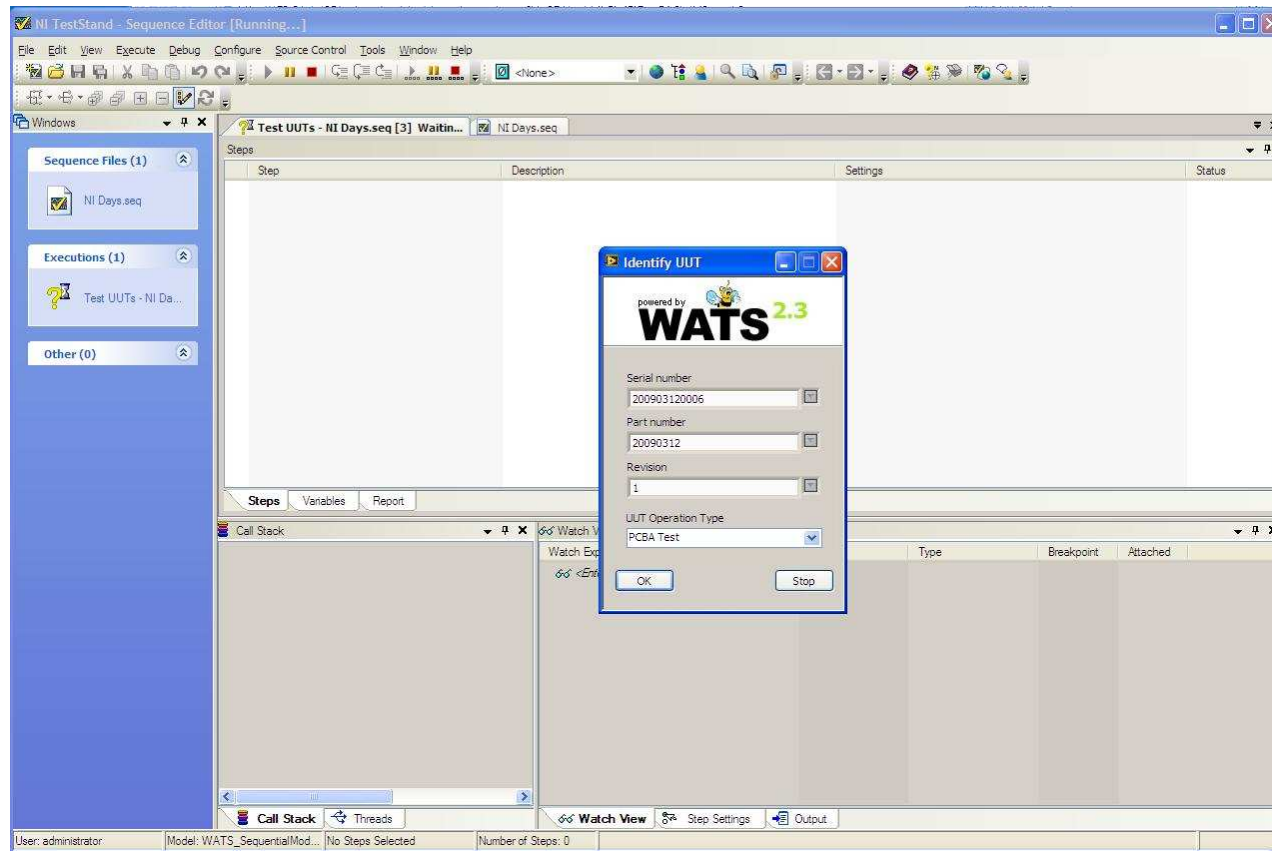
-Use LabVIEW Express VI's to configure measurements



Configure all steps using DAQ Assistant

Virinco AS

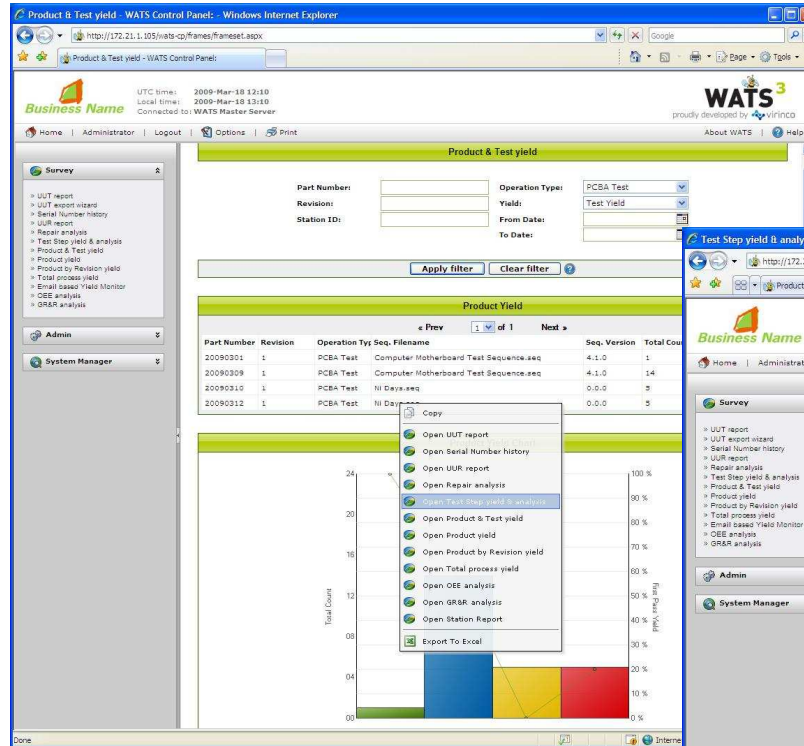
-Run the test a few times



Start the test and enter SN, PN, Rev and OperationType

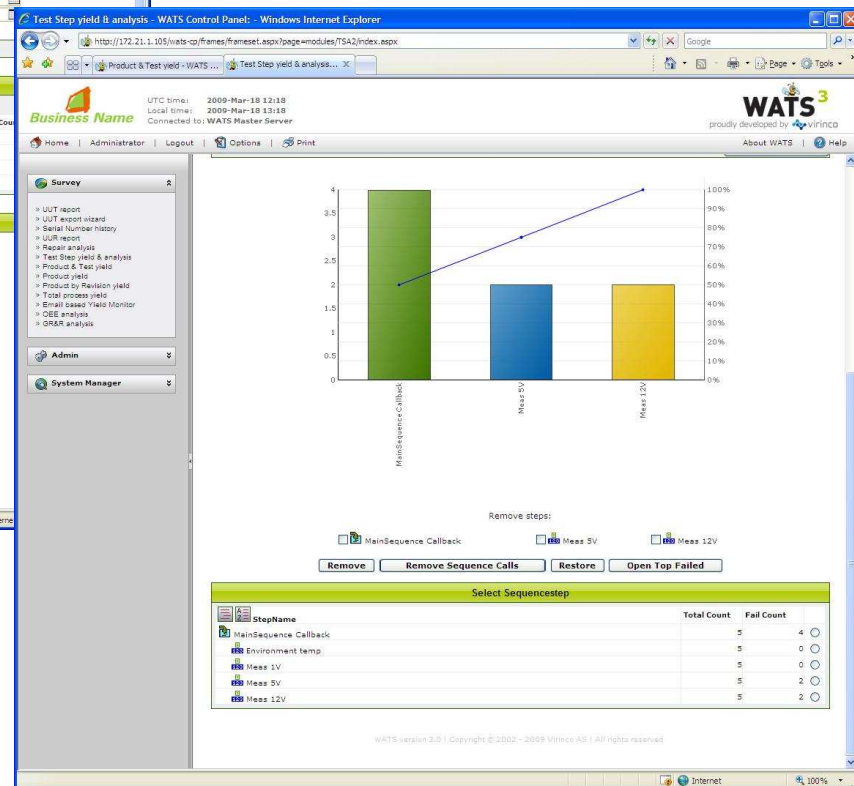
Virinco AS

-Login to WATS and analyse the test results



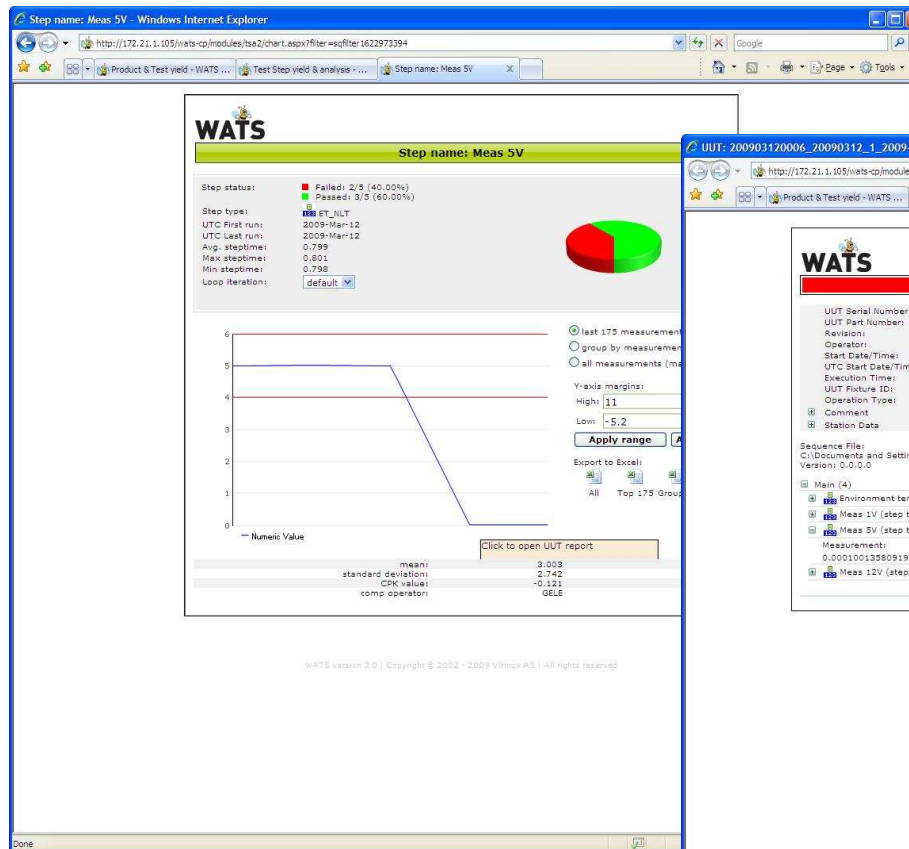
Looking at "Product and Test yield" report to get a production overview

Right-click on the desired sequence, and choose "Test Step yield & analysis" report

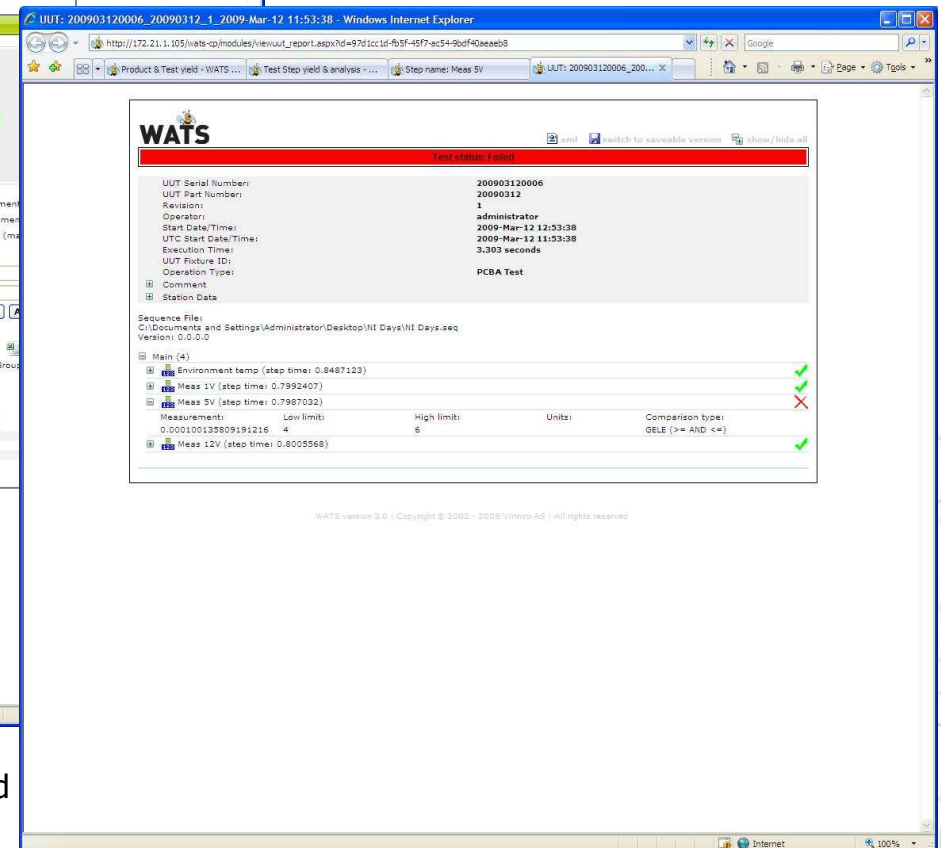


Virinco AS

-Login to WATS and analyse the test results



Looking at measurement trend for the "Meas 5V" step



Click a point on the graph to display the whole UUT Report for the selected serial number



WATS

Test Data Management



Web based reporting



- Instant access through the web browser
- Makes the test data valuable throughout the entire organization



Benefits with Test Data Management

- Reuse code
- Do not have to consider reporting - WATS handles all data flow automatically
- Easy access to analysis for optimizing product development
- High level of control on **production** quality



ROI elements

- Improve YIELD – Improved quality
- Quick drilldown to identify the “problem area”
- Reduction of time from error situations to a solution
- Link Repair and test data
- Reduced test development time
- Increase market value (control)



www.virinco.com/wats
virinco@virinco.com

