

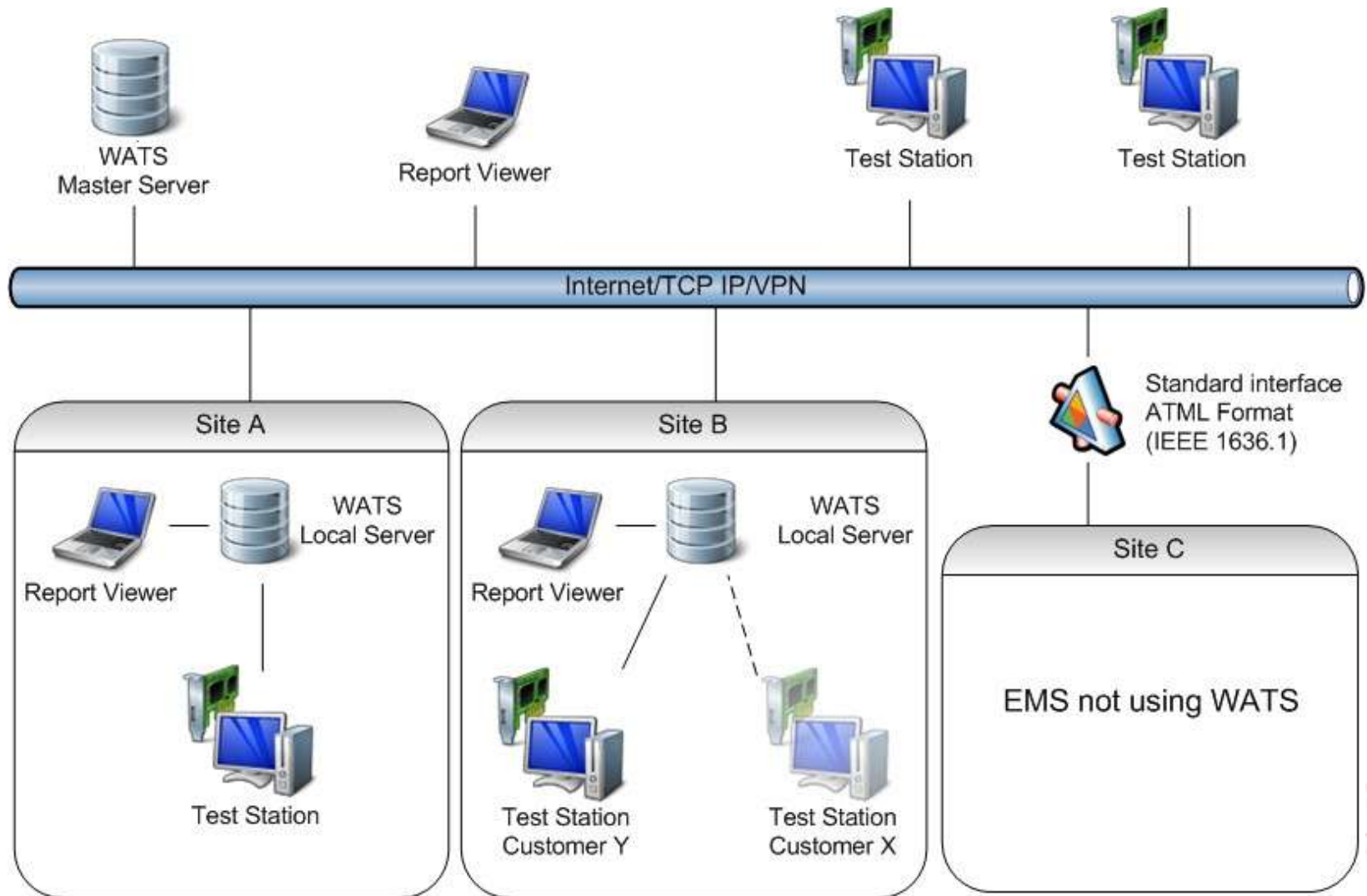


# WATS



**Leading Test Data & Quality Management**

# System set up



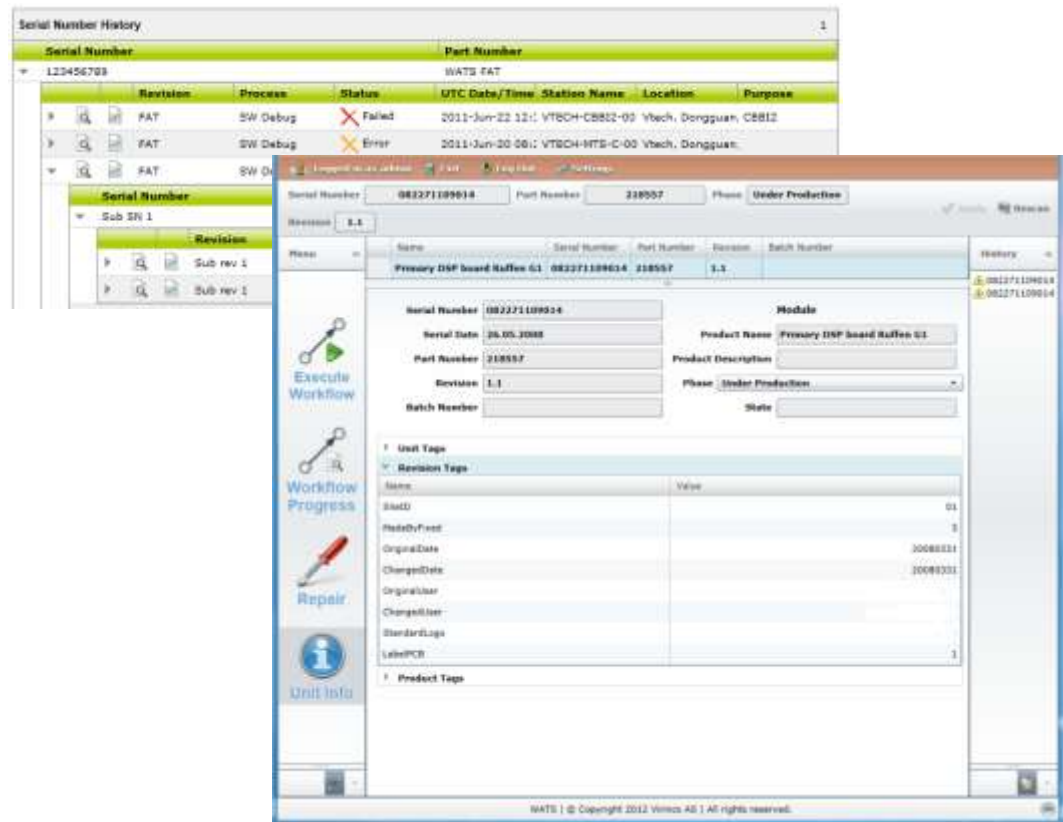


## Major Feature Areas

The following major feature areas of WATS 4:



- WATS Report & Analysis Module (Dashboard)
  - New grid design
  - Save filter option
  - Report generation indicator
  - My Settings
  - WATS Station Map
  - Miscellaneous functionality
  - Query and speed improvements
- WATS Control Panel
  - Configuration & settings
- WATS Client
  - Automatic update
  - Activation
- Archiving UUT reports
- Miscellaneous



# WATS New Modules

Select the Modules that best fit your business needs, and increase according to organizational development

**UUT Reporting**  
Structured, centralized and automatic test data collection



**Repair**  
UUR reporting and analysis

**Software**  
Manage and automate distribution of any software and files



**Workflow**  
Globally enforced unit routing and WIP tracking

**Dashboard**  
Get live monitoring



**Yield & Trends**  
Real-time yield and trend analysis

# WATS Web based Dashboard

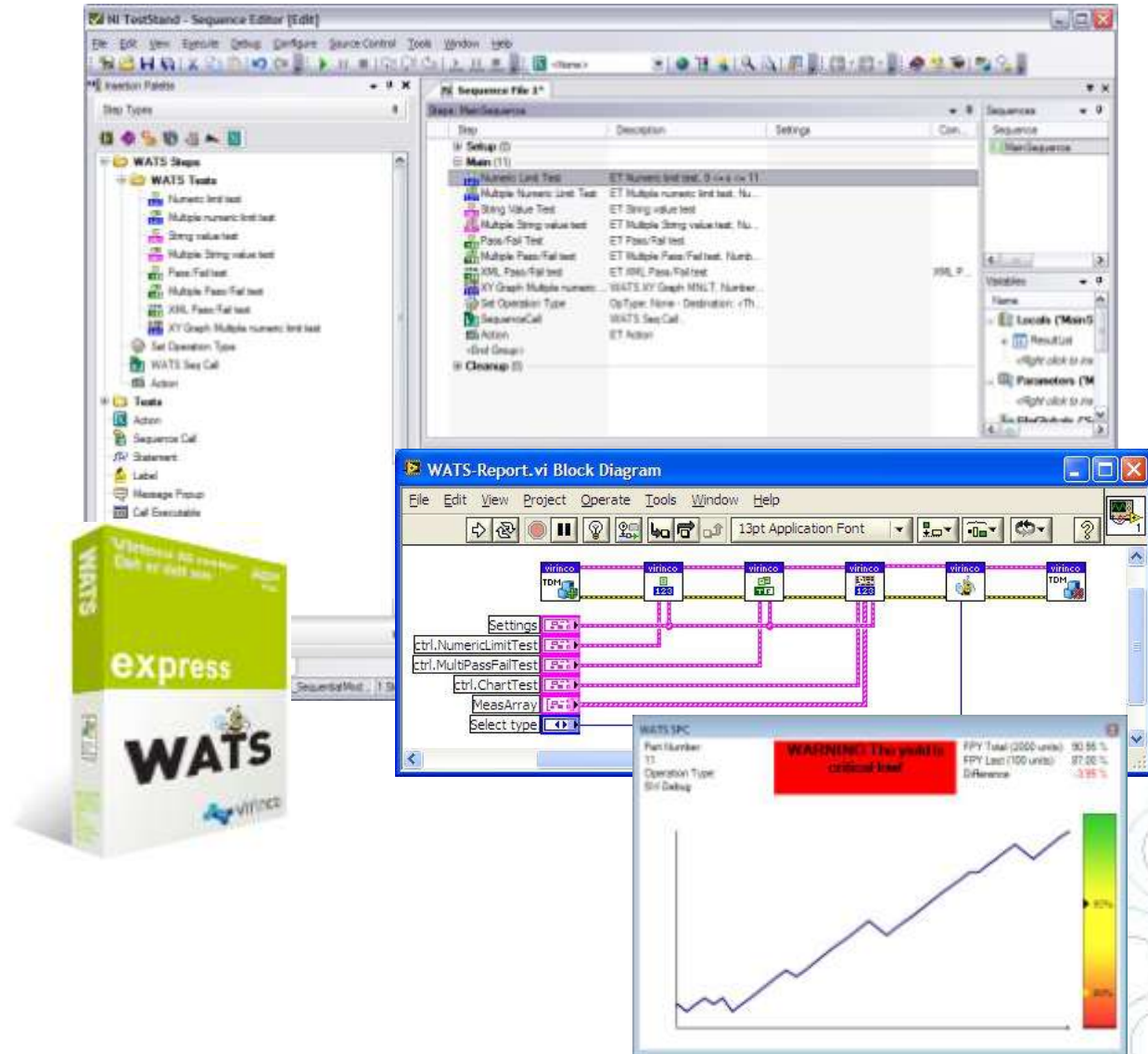
- Test & Repair reports
- Data analysis
- Yield calculations
- OEE & Gauge R&R
- Full Serial Number  
tracibility
- System Manager





# WATS Test Station

- NI TestStand Integration
- NI LabVIEW toolkit
- VisualStudio.NET API
- Multi-site connection
- Secure data transfer
- Real time YIELD monitor improving quality at the Test Station



# WATS Manual Inspection

- *Electronic Checklist*
- *Collects test data from operator*
- *Windows WEB application*

The screenshot displays the WATS Manual Inspection software interface. The window title is "WATS Manual Inspection - Pre-test workmanship inspection". It features a header section with fields for "Serial Number" (085271000362), "Part Number" (241114.112), and "Revision" (1.3). Below this is a "Fail Codes" section with a note "(drag fail code on failed)".

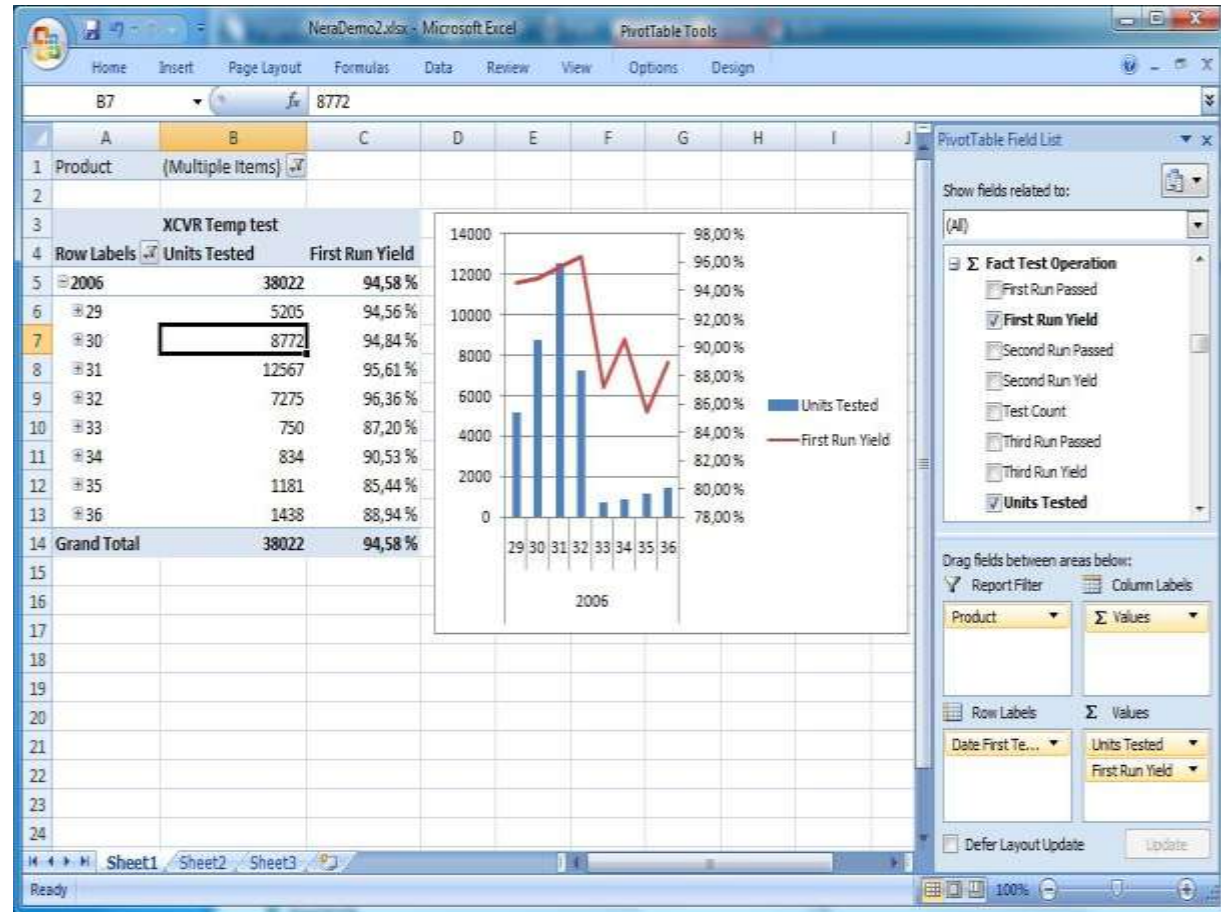
The main area contains a checklist of inspection items, each with a status icon (green checkmark for pass, red X for fail) and a description in English and Slovak. The items are grouped into "Sub-Assembly inspection" and "System assembly inspection".

Item	Description	Status
Sub-Assembly inspection	Inspection by Sub-Assembly	Pass
MCB position	Check the right position of MCBs	Pass
MCB locked	Check if the MCB are locked properly	Pass
Cable position	Check right position of cables	Pass
Silicone gel	Check if the silicone gel is applied	Pass
Labels	Check if all labels are applied and have correct position	Pass
System assembly inspection	System assembly inspection	Fail
Mechanical parts	Check if system and mechanical parts are not damaged and clean	Pass
Torque on CU conn.	Check connections on copper parts for right torque values	Fail
Assembly process - Screws & Washers: In...	Tightened to correct torque.	Pass
Torque on shunt an...	Check torque value on shunt, puls, minus CU, contactor LVLD, contactor LVBD and mark connections with colour	Pass
Torque on other con...	Check rest of connections and terminals	Pass
General placement	Check if everything is in place according to documentation	Pass
Labels	Check if all labels are in place	Fail
Assembly process - Labels: Incorrect used	Wrong position	Fail
System condition	Check whole system and all parts for damage	Pass

At the bottom, there is a "Continue" button and a status bar indicating "Connected to WATS" and "0 pending, 0 created".

# Building reports with Excel

- Create Excel reports using Pivot tables
- Drill down and analyze yield & production data





# Real-time analysis of product- and process quality

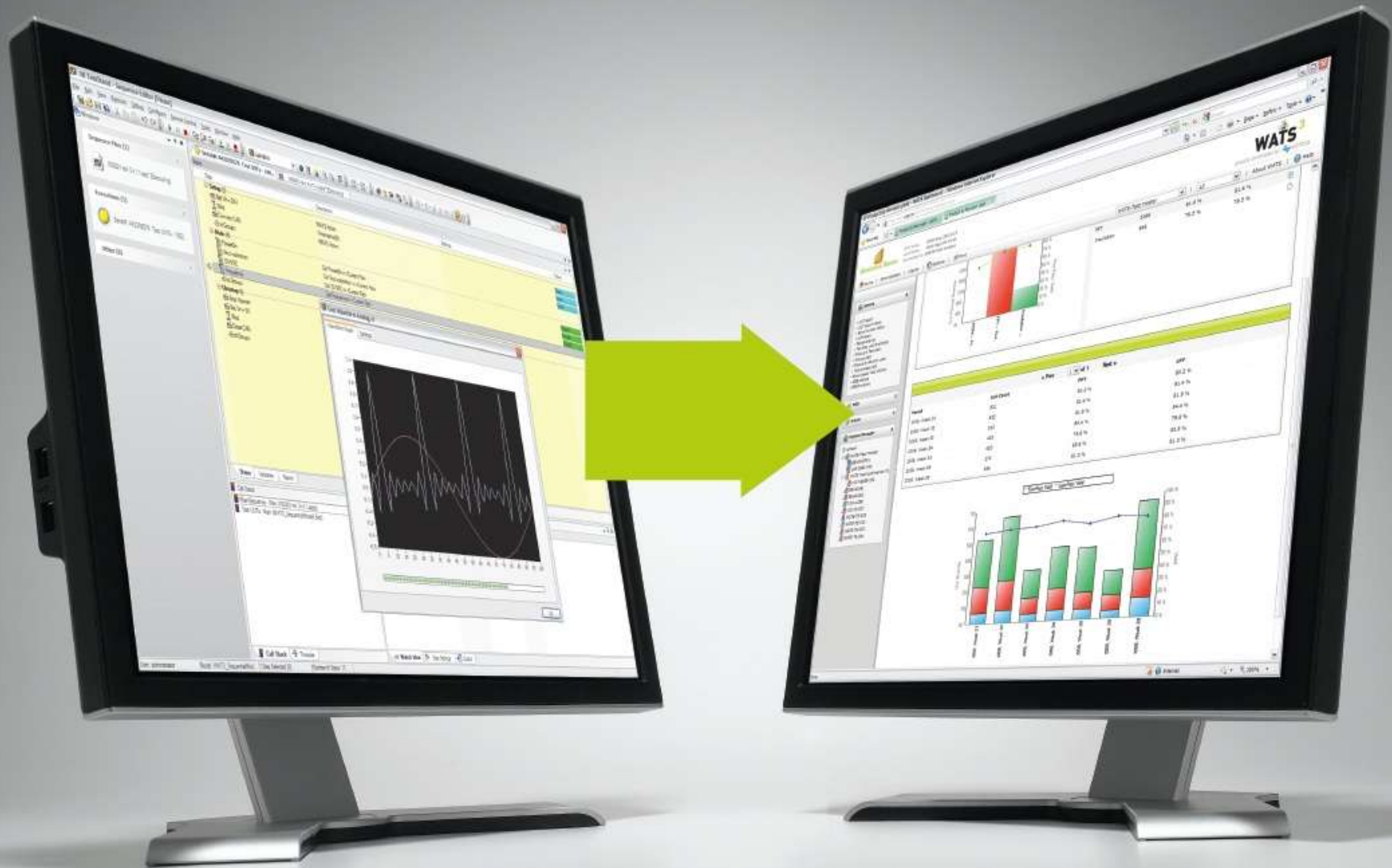
## What is the value ?

- Reduced direct costs
- Reduced indirect costs
- Capitalize on already made investments in test equipment
- Improved Efficiency
- Improved Profitability
- Disaster management
- Exploit market opportunities
- Brand name value



*adding value to your product through use of test data !*

- WATS is an off-the-shelf Test Data Management software that fully automates test reporting and provides real-time analysis and reports. Standard product that requires little or no consulting services and has been developed since 2003.
- WATS makes YIELD, CPK, SPC and Test, Repair & Production data easily accessible through your web browser.
- WATS makes a complex technical analysis & reporting solution easy to use by all disciplines
- WATS easily integrates with any test application from whatever nature (Electronics, Mechanics, Optics), scaling from a single test station to global data collection.
- WATS collects test data from all internal and external production sites.



*Online SPC,  
Analysis and Reports of test data directly from NI TestStand into your web browser.*