

FLEXSTAND



Morten Pedersen

Chief Project Manager
Test Solutions



- B.Sc.E.E, Aarhus, Denmark (1999)
- Telital R&D Denmark A/S (1999->2003)
 - HW and SW development on mobile phones test systems.
- CIM Industrial Systems A/S (2003→)
 - SW and HW development
 - TestStand & LabVIEW certified
 - Project Management
 - Resources Management



Agenda (25 min.)

- Introduction to CIM Industrial Systems A/S
- Introduction to FlexStand
- TestStand API
- Application architecture
- Plug-ins (Templates, Palettes)
- Demo



CIM Industrial Systems A/S

- Computer Integrated Manufacturing
 - Test Solutions (15)
 - Test & Measurement solutions
 - Control and simulation solutions
 - Software Solutions (10)
 - Intranet and DB solutions
 - Product SW developement
- Turn key solutions
- Consultancy assistance
- Software development
- Project management



**Green Engineering
Technology Day**

24. marts 2010 i Kolding

 [Mere information og registrering](#)

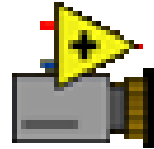
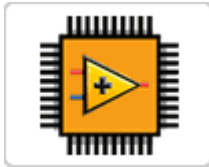


LV and TestStand Services

Europe's Leading
in NI LabVIEW and NI TestStand



NI Technology knowledge in Test Solutions



CIM Industrial
Systems A/S

FLEXSTAND

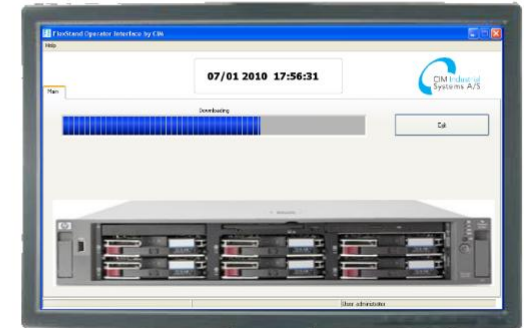
PCB test station



Final test station



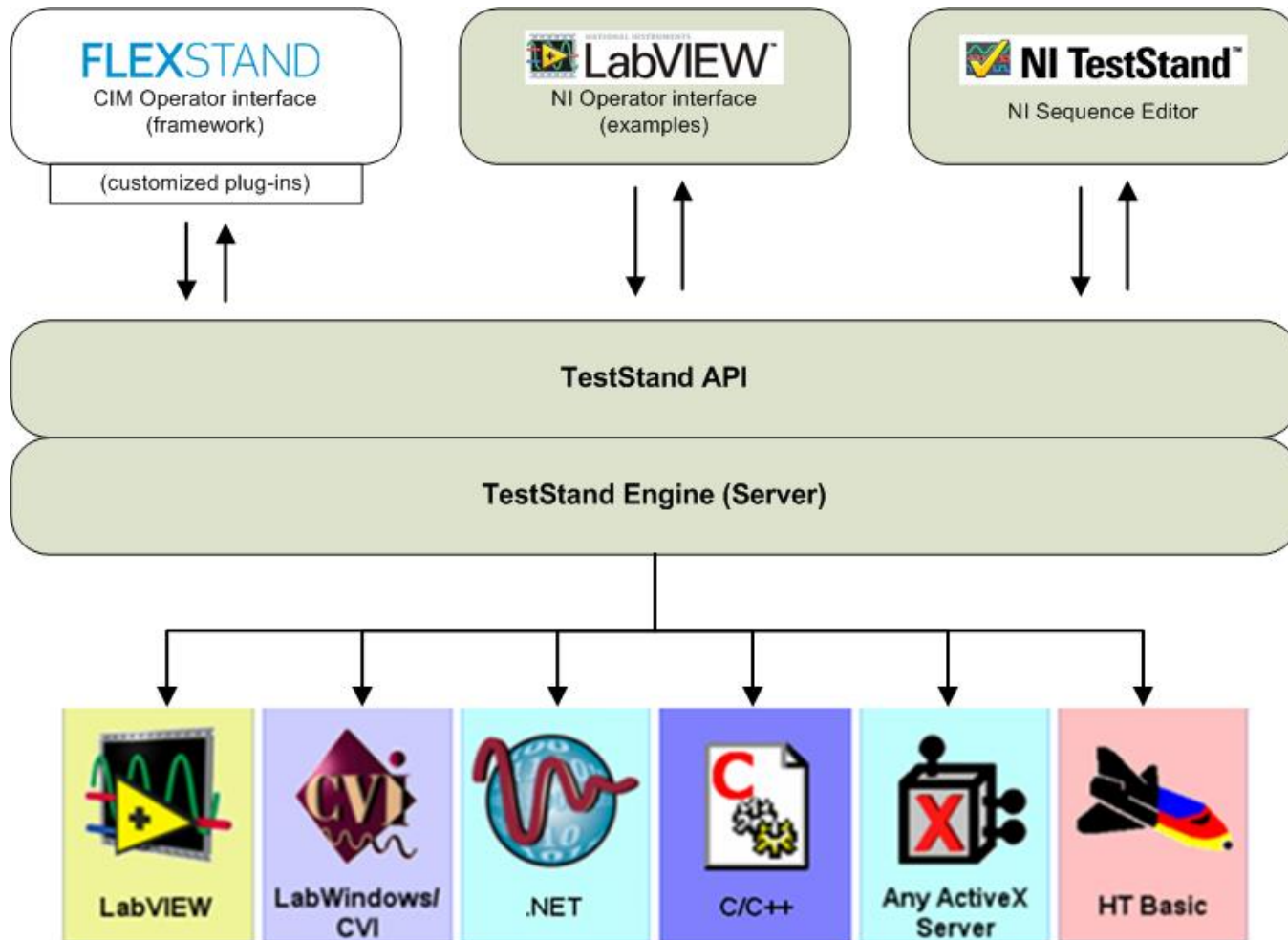
Download station



FlexStand framework loaded with different plug-ins

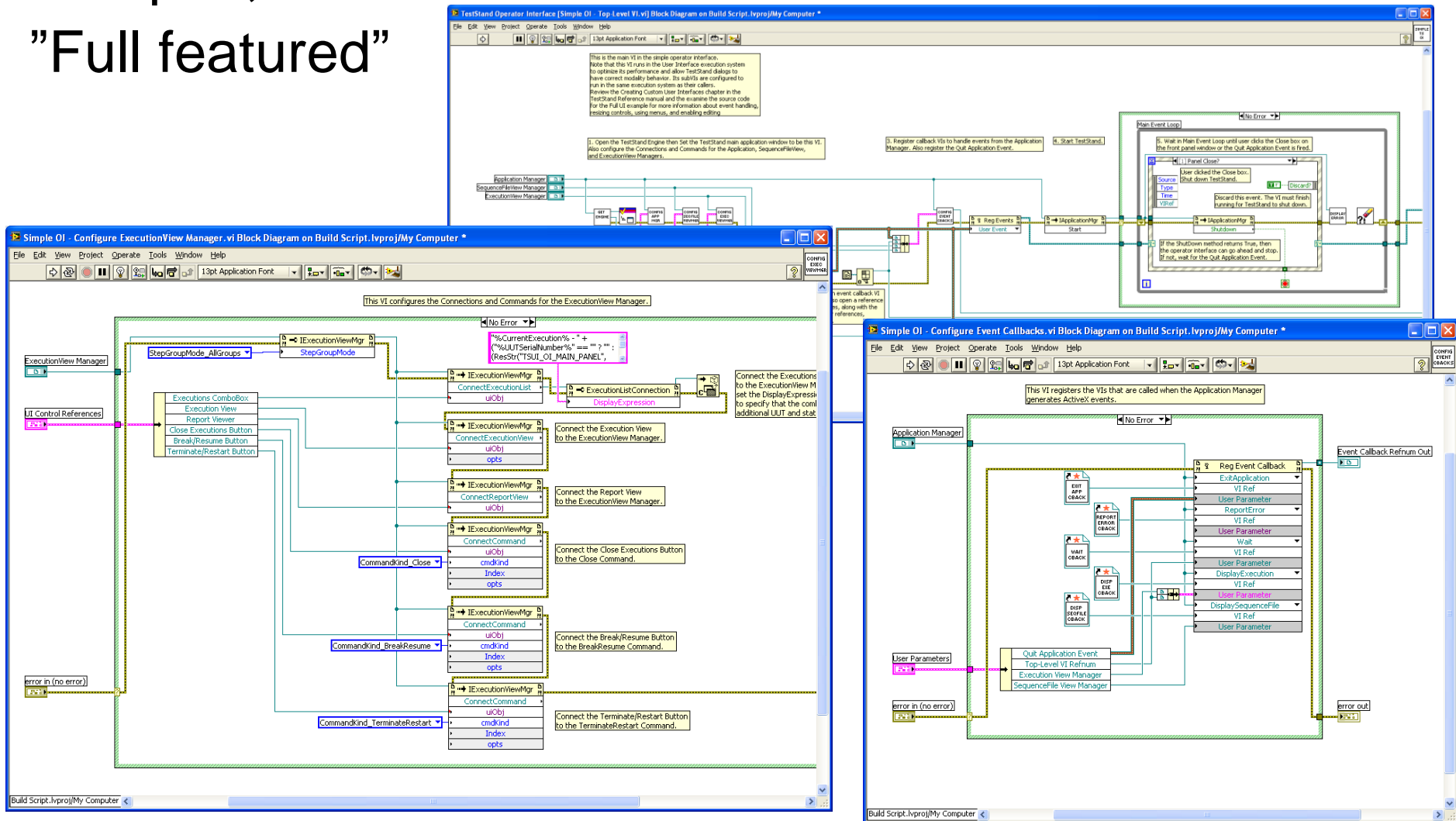


TestStand and Operator interfaces



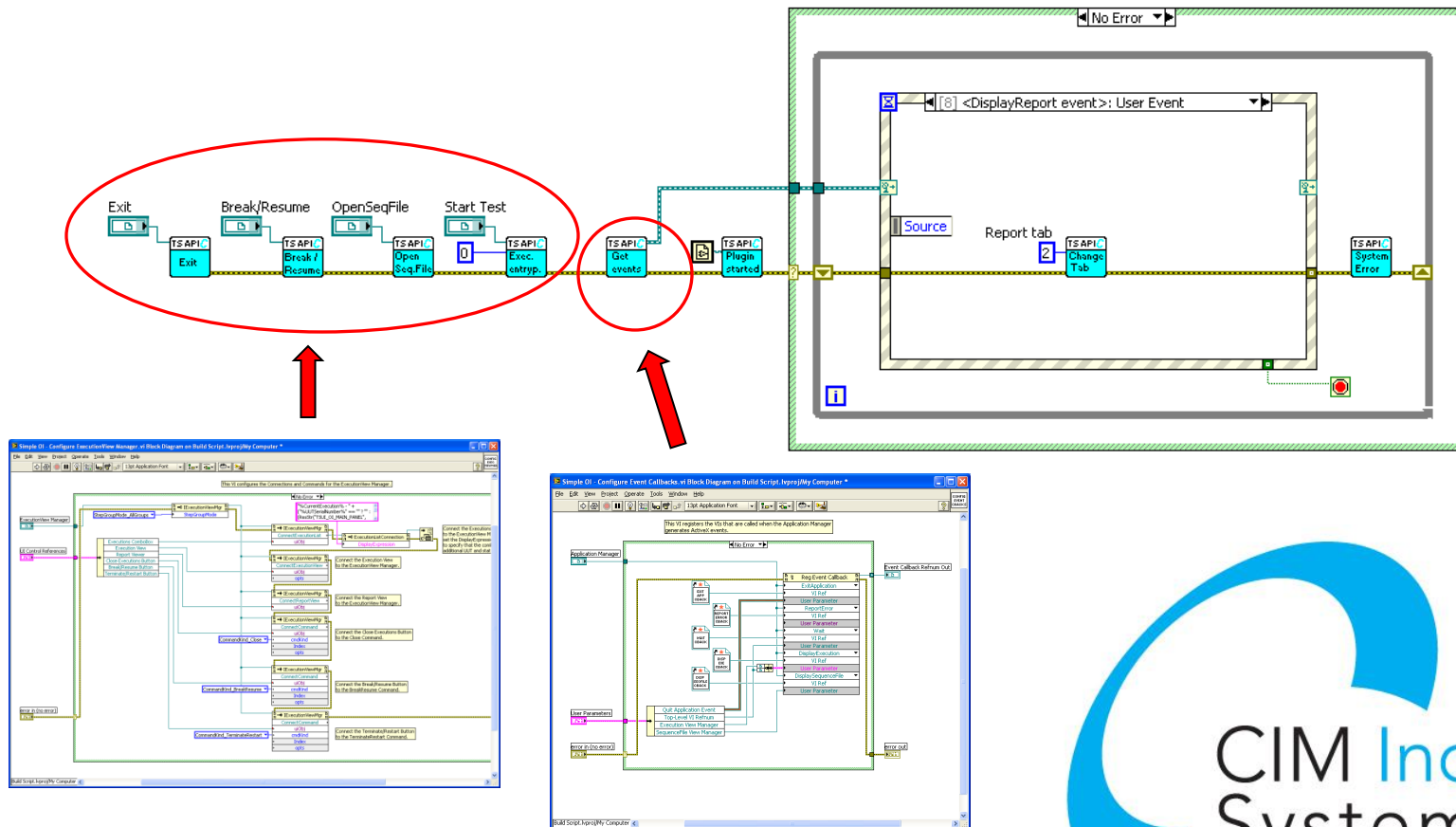
NI TestStand examples:

"Simple",
"Full featured"

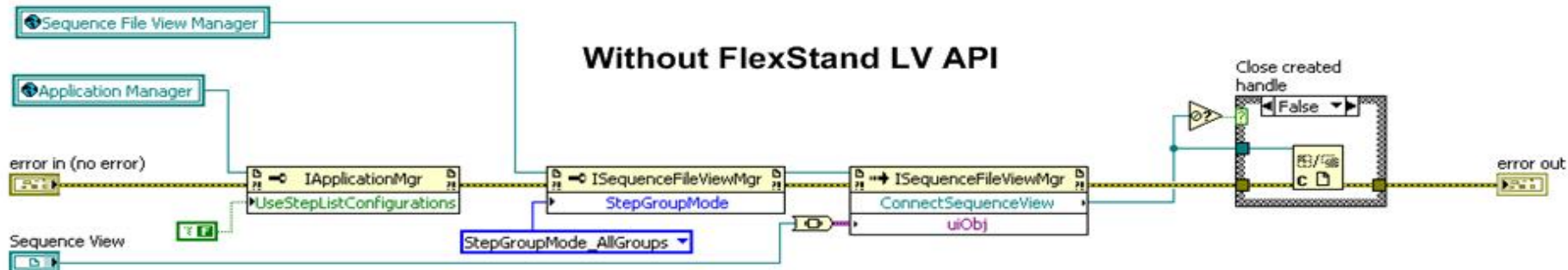
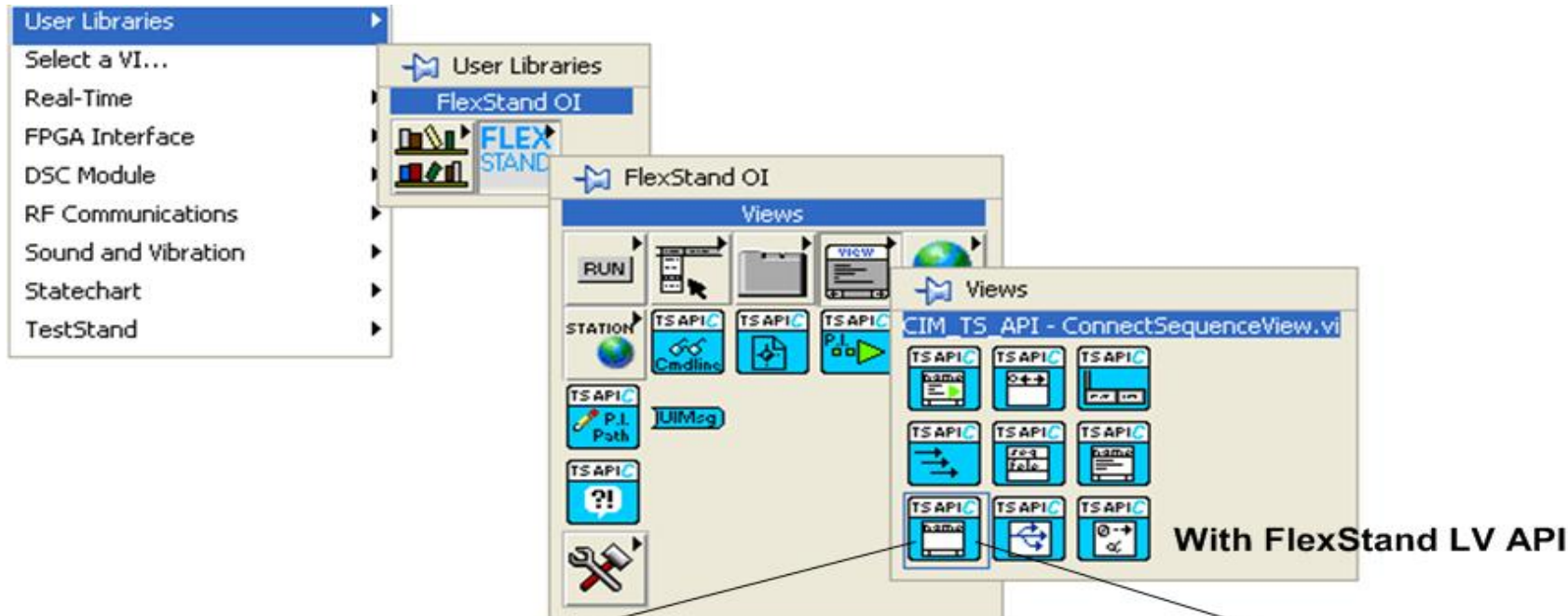


FLEXSTAND OI API examples:

- Hides advanced TestStand operations in VIs with a simple interface



FLEXSTAND LabVIEW palette



FLEXSTAND OI Design

Diagram illustrating the FLEXSTAND OI Design interface components:

- Your menu:** Points to the menu bar (File, Edit, Configure, Help).
- Your tabs:** Points to the tabs (Main, Sequence File, Execution, Report, Instructions).
- Your logo:** Points to the CIM Industrial Systems A/S logo.
- Integrated dialogs:** Points to the "Passed" dialog box.
- Your main plugin:** Points to the main test execution area.
- Your bottom plugin:** Points to the status bar.

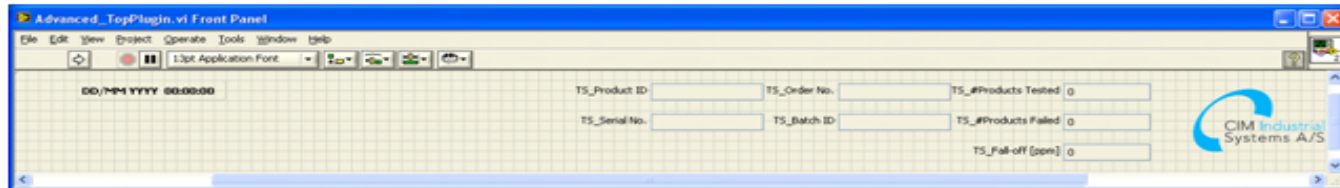
The interface displays a test sequence table with columns: Name, Low, Value, High, and Status.

Name	Low	Value	High	Status
Setup (2)				Done
Simulation Dialog				Done
Turn Vacuum Table On				Done
Main (13)				Passed
Powerup Test		True		Passed
PSU NoiseTest		True		Passed
RAM Test		True		Passed
Post URL to Instructions Tab				Done
IF				Done
CPU Test		True		Passed
ROM Test		True		Passed
Video Test	0	< 5	< 10	Passed
Keyboard Test	5	< 6		Passed
IF				Done
CPU Diagnostics				Done
ROM Diagnostics				Done
RAM Diagnostics				Done
Video Diagnostics				Done
Keyboard Diagnostics				Done
End				Done
Else				Done
Powerup Diagnostics				Done
End				Done
End Group				Done
Cleanup (1)				Done
Turn Vacuum Table Off				Done
End Group				Done

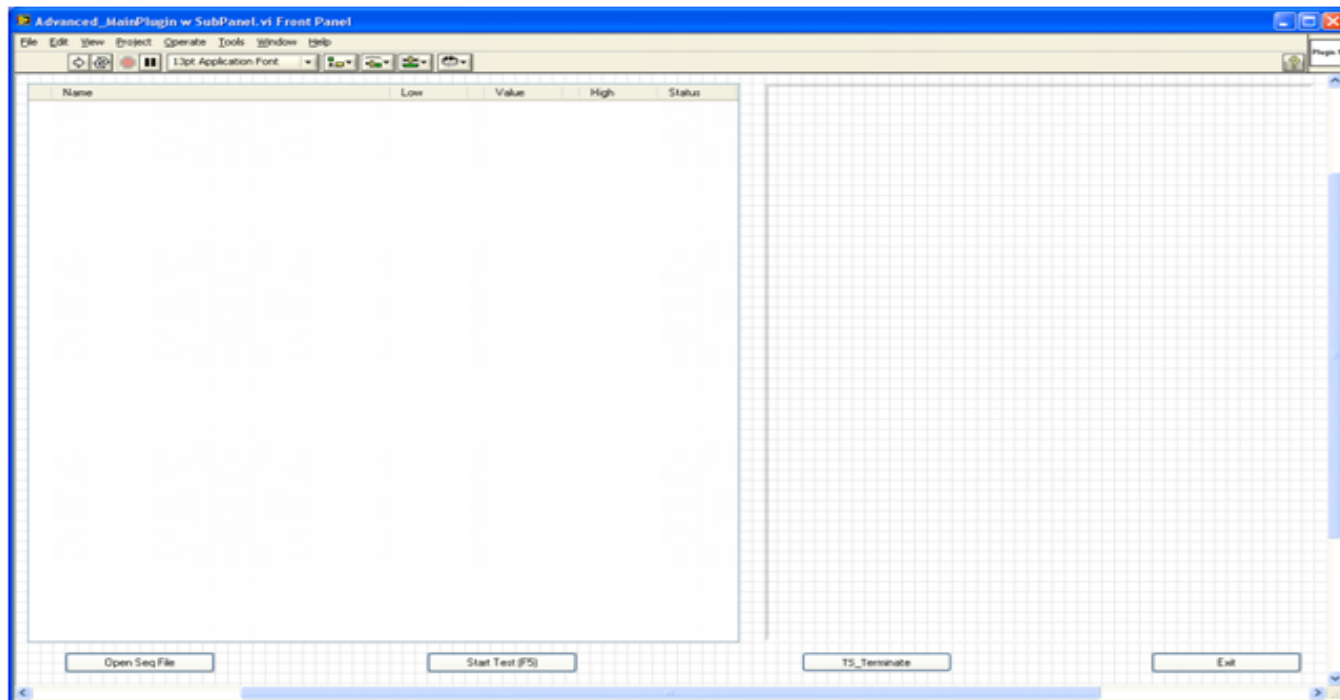
The main plugin area displays a large green "Passed" message, a "Scan Serial Number" field, a "Serial Number" field containing "354-652-1-8", and a photograph of a circuit board. Below the photograph are buttons for "Start Test", "Stop Batch", "Terminate", and "Exit".

The status bar at the bottom shows: FlexStand OI Demo - Advanced - Computer Motherboard Te... MainSequence, User: administrator, 100%.

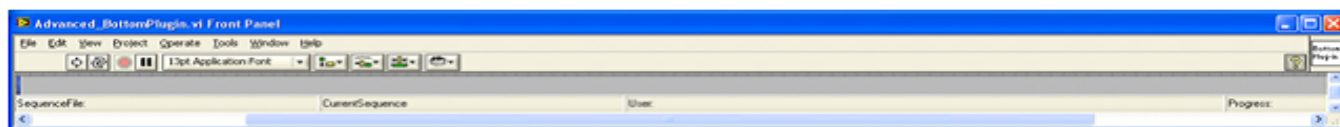
FLEXSTAND OI Design



← Top plugin

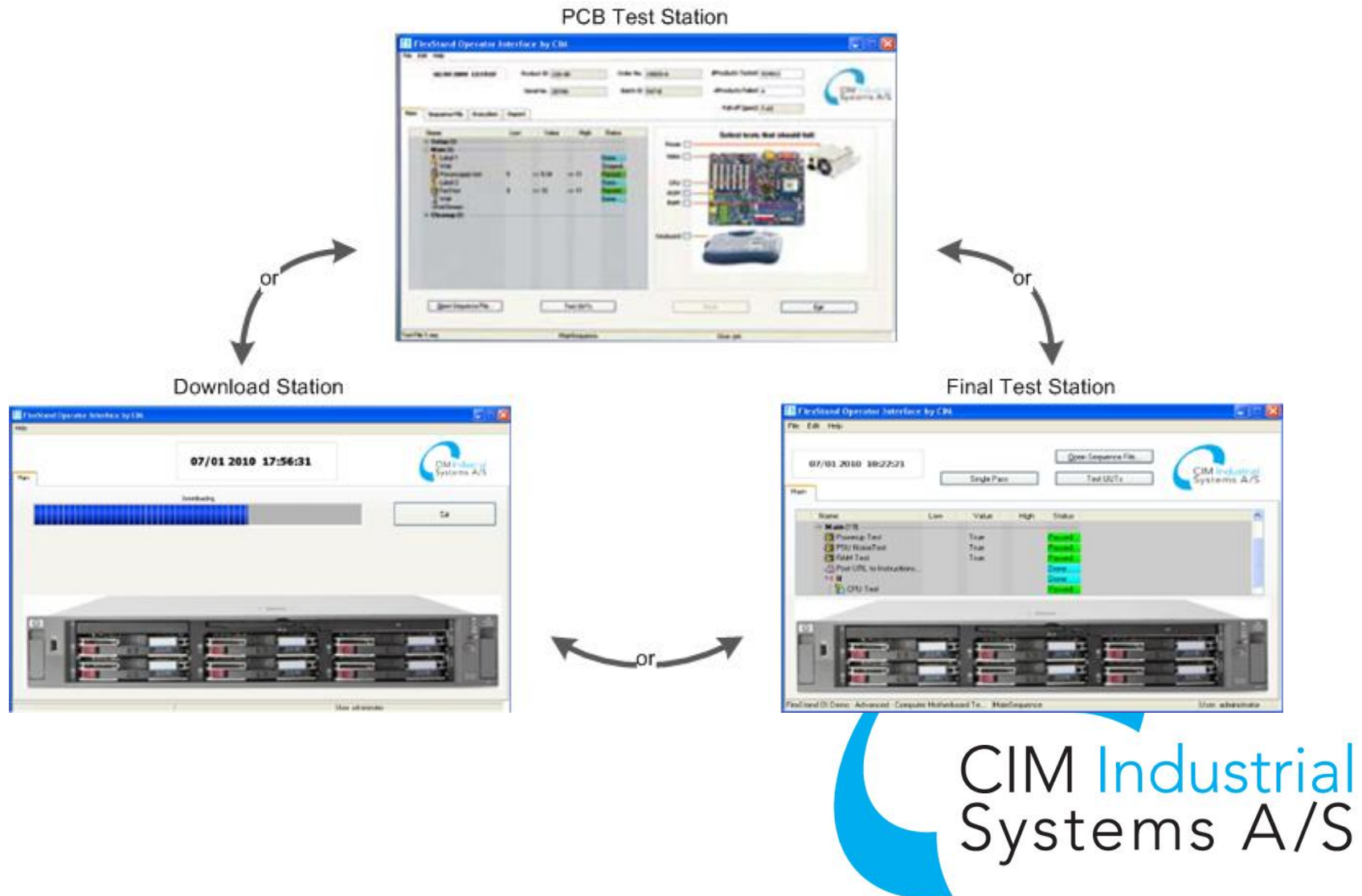


← Main plugin



← Bottom plugin

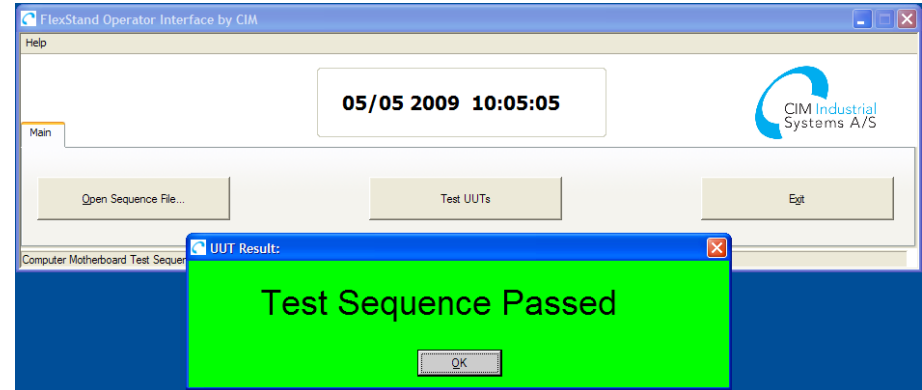
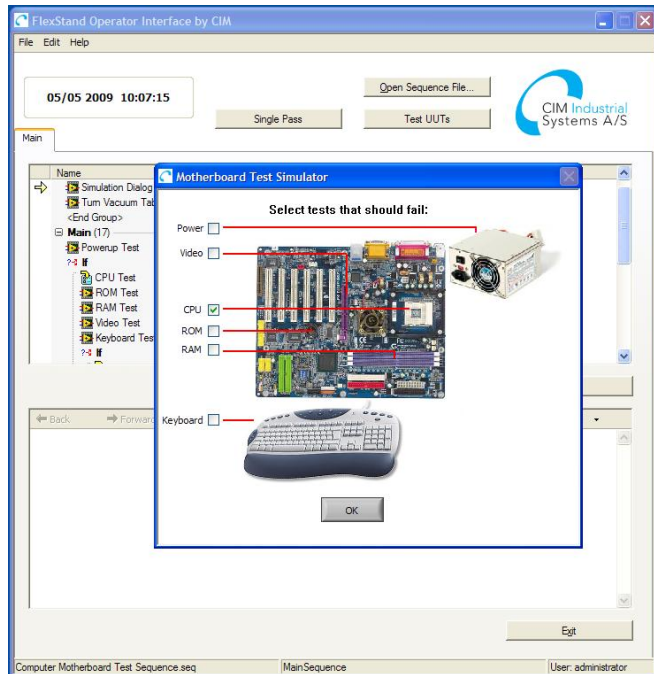
Practical examples



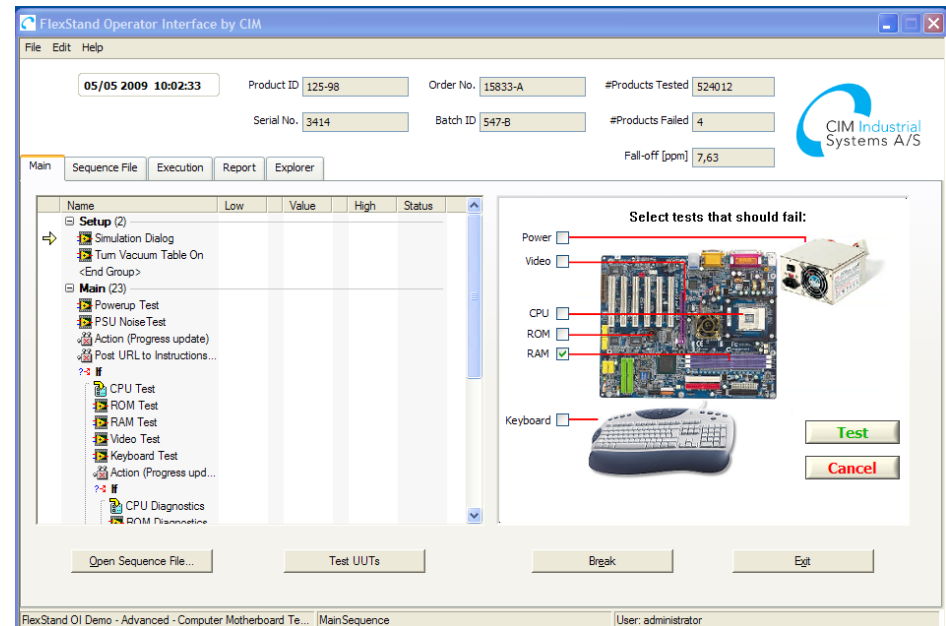
Shipped examples

Simple

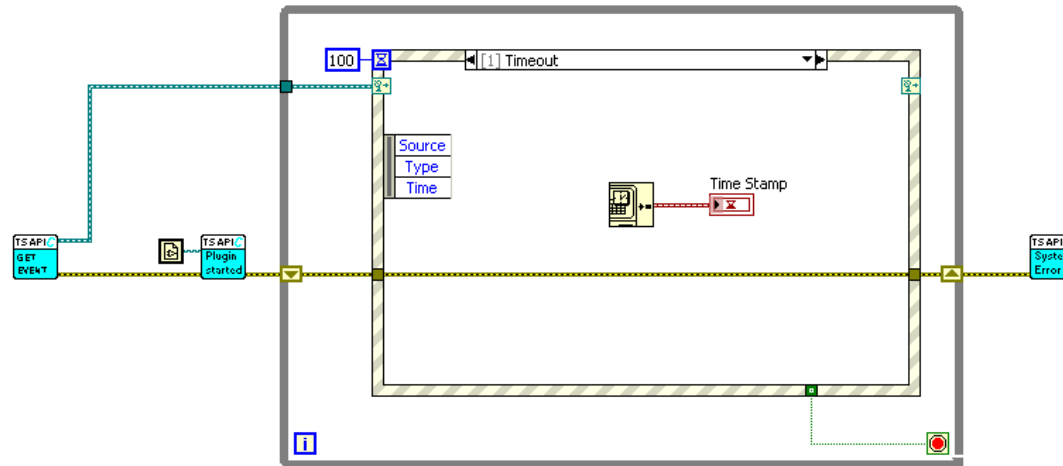
Standard



Advanced




Demo 1



See more at:

www.FlexStand.eu

www.ni.com



The screenshot shows the FlexStand website with a blue header and a navigation bar. The main content area features a large blue banner with the text "Simplify your test process by using FlexStand Operator Interface" and "Out of the box, Operator Interface for TestStand, based on evidence". Below this, it says "Flexible – one API for all testers" and "Encapsulation of TestStand API into LabVIEW VIs". A computer monitor displaying the FlexStand interface is shown. To the right of the banner, the text reads "Not all faults look bad! Just think out of the box..." and "FLEXSTAND". Below the banner, the text says "FlexStand Operator Interface: Build TestStand solutions by using simple LabVIEW VIs from CIM" and "FlexStand TestView: Out of the box monitoring and control application for your devices." The footer contains the copyright information "Copyright © 2009 by CIM Industrial Systems A/S" and a "Sitemap" link.

FLEXSTAND

CIM Industrial Systems A/S

Home Product Info Download Contact Info About CIM Buy License My Licenses - Login

Simplify your test process by using FlexStand Operator Interface

Out of the box, Operator Interface for TestStand, based on evidence

Flexible – one API for all testers

Encapsulation of TestStand API into LabVIEW VIs

Not all faults look bad! Just think out of the box...

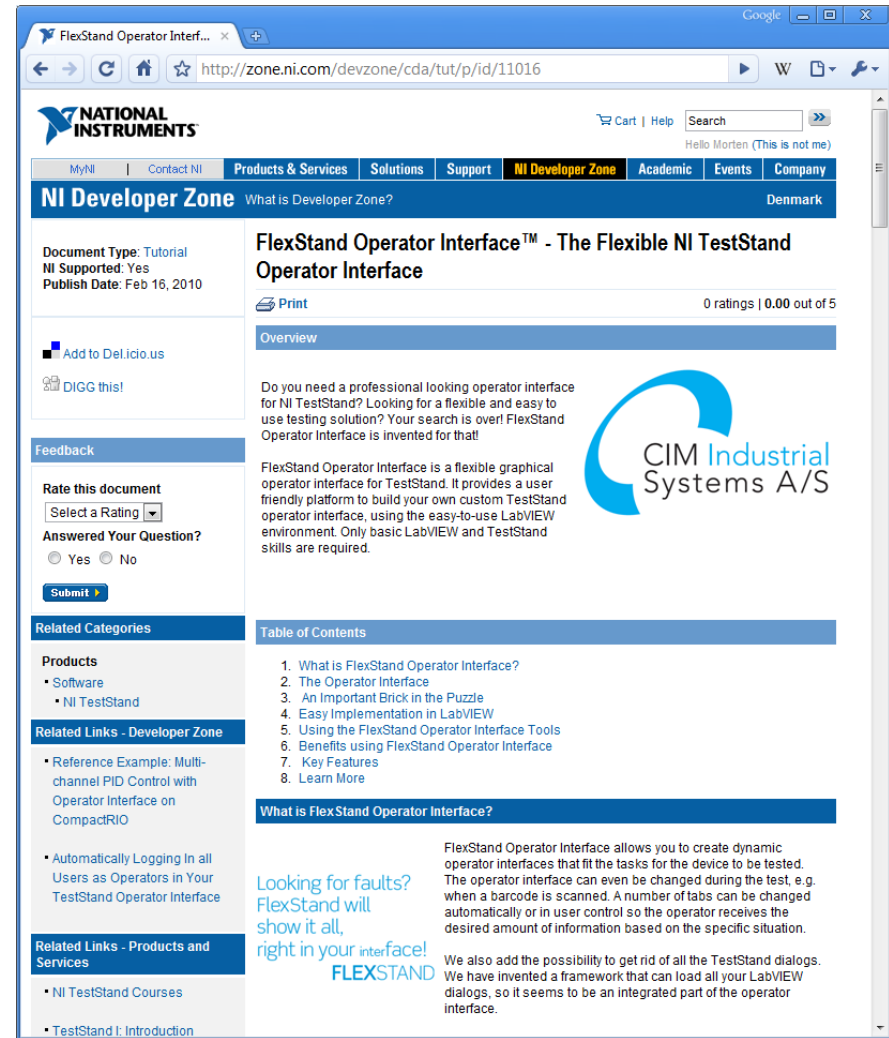
FLEXSTAND

FlexStand Operator Interface:
Build TestStand solutions by using simple LabVIEW VIs from CIM

FlexStand TestView:
Out of the box monitoring and control application for your devices.

Copyright © 2009 by CIM Industrial Systems A/S

[Sitemap](#)



The screenshot shows the NI Developer Zone page for the FlexStand Operator Interface. The page has a blue header with the National Instruments logo and a navigation bar. The main content area features a large blue banner with the text "FlexStand Operator Interface™ - The Flexible NI TestStand Operator Interface". Below this, it says "Do you need a professional looking operator interface for NI TestStand? Looking for a flexible and easy to use testing solution? Your search is over! FlexStand Operator Interface is invented for that!". A computer monitor displaying the FlexStand interface is shown. To the right of the banner, the text reads "Looking for faults? FlexStand will show it all, right in your interface!" and "FLEXSTAND". Below the banner, the text says "FlexStand Operator Interface allows you to create dynamic operator interfaces that fit the tasks for the device to be tested. The operator interface can even be changed during the test, e.g. when a barcode is scanned. A number of tabs can be changed automatically or in user control so the operator receives the desired amount of information based on the specific situation. We also add the possibility to get rid of all the TestStand dialogs. We have invented a framework that can load all your LabVIEW dialogs, so it seems to be an integrated part of the operator interface."

NATIONAL INSTRUMENTS

MyNI | Contact NI | Products & Services | Solutions | Support | **NI Developer Zone** | Academic | Events | Company

NI Developer Zone What is Developer Zone? Denmark

Document Type: Tutorial
NI Supported: Yes
Publish Date: Feb 16, 2010

FlexStand Operator Interface™ - The Flexible NI TestStand Operator Interface

0 ratings | 0.00 out of 5

Overview

Do you need a professional looking operator interface for NI TestStand? Looking for a flexible and easy to use testing solution? Your search is over! FlexStand Operator Interface is invented for that!

FlexStand Operator Interface is a flexible graphical operator interface for TestStand. It provides a user friendly platform to build your own custom TestStand operator interface, using the easy-to-use LabVIEW environment. Only basic LabVIEW and TestStand skills are required.

CIM Industrial Systems A/S

Looking for faults? FlexStand will show it all, right in your interface!

FLEXSTAND

FlexStand Operator Interface allows you to create dynamic operator interfaces that fit the tasks for the device to be tested. The operator interface can even be changed during the test, e.g. when a barcode is scanned. A number of tabs can be changed automatically or in user control so the operator receives the desired amount of information based on the specific situation. We also add the possibility to get rid of all the TestStand dialogs. We have invented a framework that can load all your LabVIEW dialogs, so it seems to be an integrated part of the operator interface.

Table of Contents

1. What is FlexStand Operator Interface?
2. The Operator Interface
3. An Important Brick in the Puzzle
4. Easy Implementation in LabVIEW
5. Using the FlexStand Operator Interface Tools
6. Benefits using FlexStand Operator Interface
7. Key Features
8. Learn More

What is FlexStand Operator Interface?

Products

- Software
- NI TestStand

Related Links - Developer Zone

- Reference Example: Multi-channel PID Control with Operator Interface on CompactRIO
- Automatically Logging In all Users as Operators in Your TestStand Operator Interface

Related Links - Products and Services

- NI TestStand Courses
- TestStand I: Introduction

Thanks for the time

www.cim.as

Win an iPod at our booth

