



**2C is an engineering
team specialized in
development of
high-tech products**

**2C A/S
Gl. Lundtoftevej 1
DK - 2800 Lyngby
Denmark
T +45 70 27 42 00
F +45 70 27 52 00
W www.2c.dk**



Company information

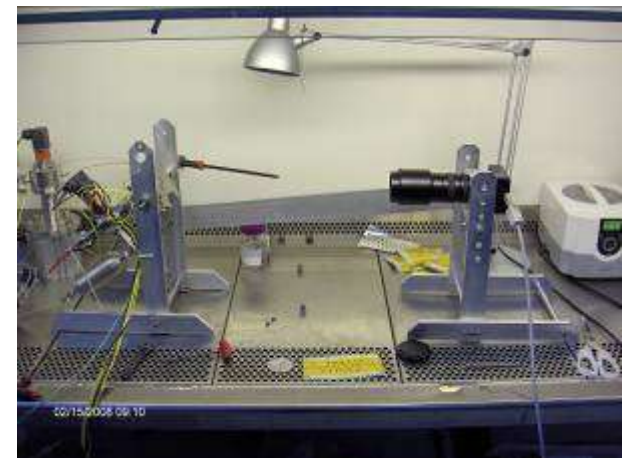
Established:
1999

Founder, CEO:
Christian Caspersen

Location:
Lyngby, Copenhagen, Denmark
(close to TU of Denmark)

Facilities:
200 m² office, 250 m² lab

Equipment in lab:
A number of small machinery, LAF
bench and measuring devices



How we work with clients

Production support

Subcontractor relations, FAT, SAT, validation
in medical device production lines

Product Development

Innovative product development, reduction of
time to market and cost price reduction

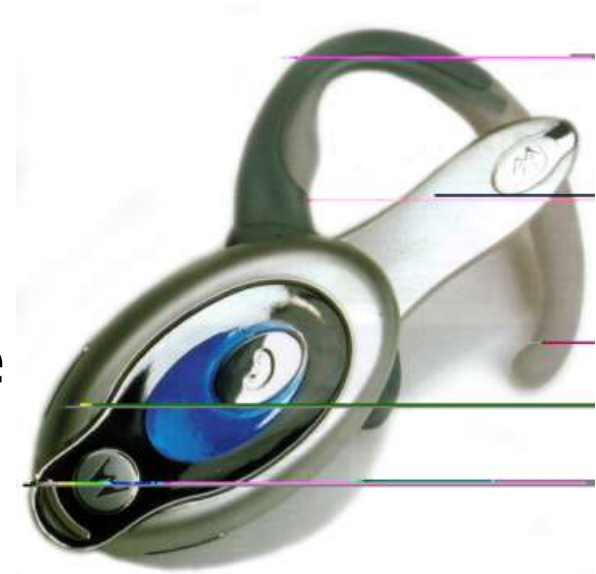
Test Systems

Delivery of complete custom specific test systems
for development or production purposes



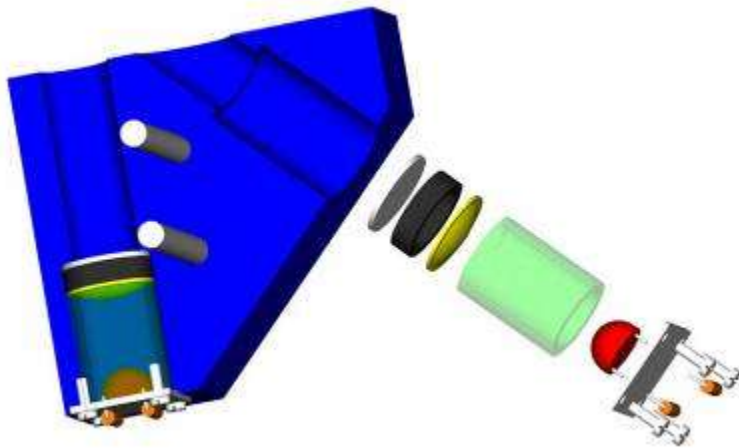
Precision mechanics

- Design of miniature devices
- Interfacing of technologies
- Plastic precision components
- Material and process knowledge
- DFM for mass production



Optical systems

- Laser detection systems
- Image processing systems
- Laser/Doppler-systems
- Medical diagnostic systems
- Compact optical sensors



Instrumentation design

- Mechatronic design
- Integration of technologies
- Experimental testing
- LabView programming



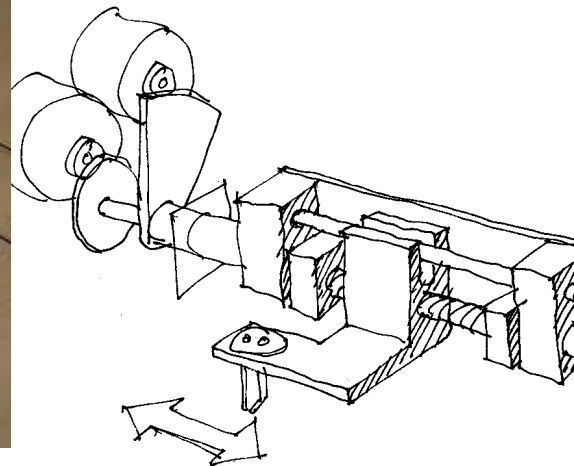
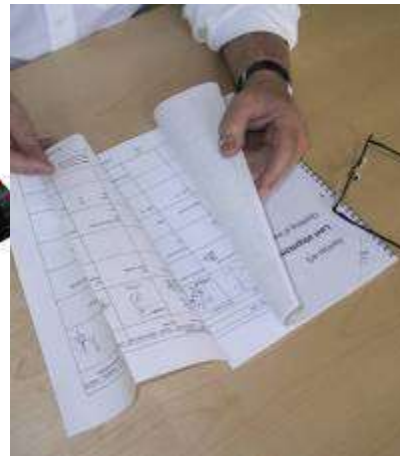
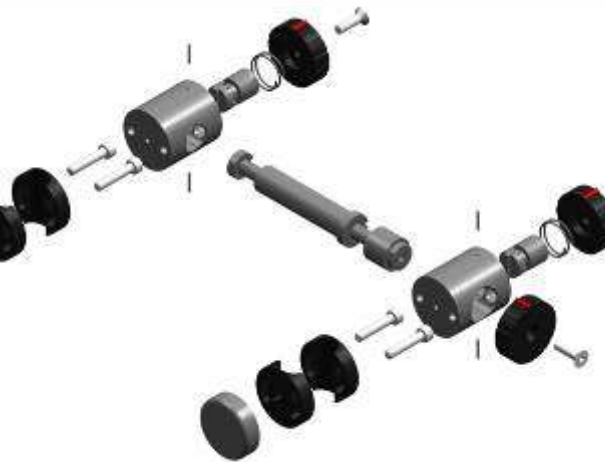
Flowsystems for Pharma and Medical Devices

- Pump and valve design
- Micro flow
- Dosing systems
- Injection systems



Communication, documentation and quality control

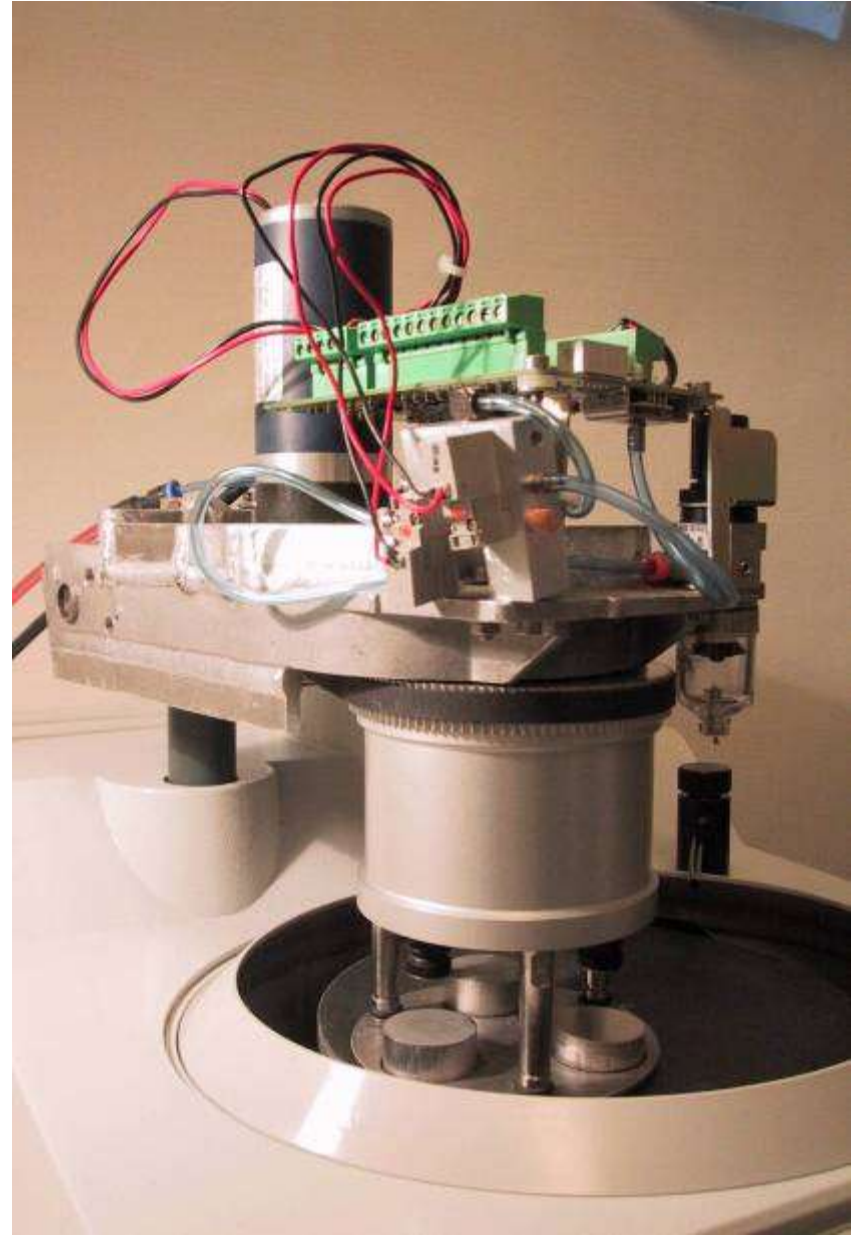
- Visualization and fast evaluation of ideas
- 3D-CAD in Pro/E and Solid Works
- Decision proposals and feasibility studies
- Complete project documentations



[Struers A/S]

Problem solving

- Calculation of properties
- Redesign
- Test and validation





[Foss Electric A/S]

New device: FoodScan

- Project management
- Mechanical concept
- Short time limit
- New type of cabinet
- Industrial design
- Touch screen MMI



[Novo Nordisk A/S]

New generation insulin pen

- Conceptual design
- Ideas and patents
- Plastic design
- Market research
- Rapid prototyping
- DFM
- Six sigma



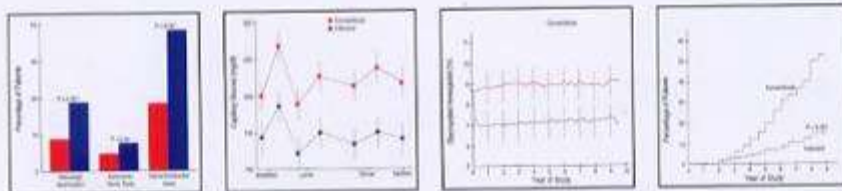


HISTORY (1993~2003)



REFERENCE

Comparison between Conventional treatment and Intensive treatment (Insulin Pump)



(Excerpt: DCCT RESEARCH GROUP) The New England Journal of Medicine 329 : 977-986 September 30, 1993

[Novo Nordisk A/S]

Insulin delivery

- Conceptual design
- Ideas and patents
- Plastic design
- Market research
- Testing and validation





[Novo Nordisk A/S]

NovoSeven Project

- Conceptual design
- Ideas and patents
- Plastic design
- Market research





[Lattec I/S]

New device technology

- Conceptual design
- Mechanical design
- Prototyping
- Experiments
- Cabinet design
- Project management

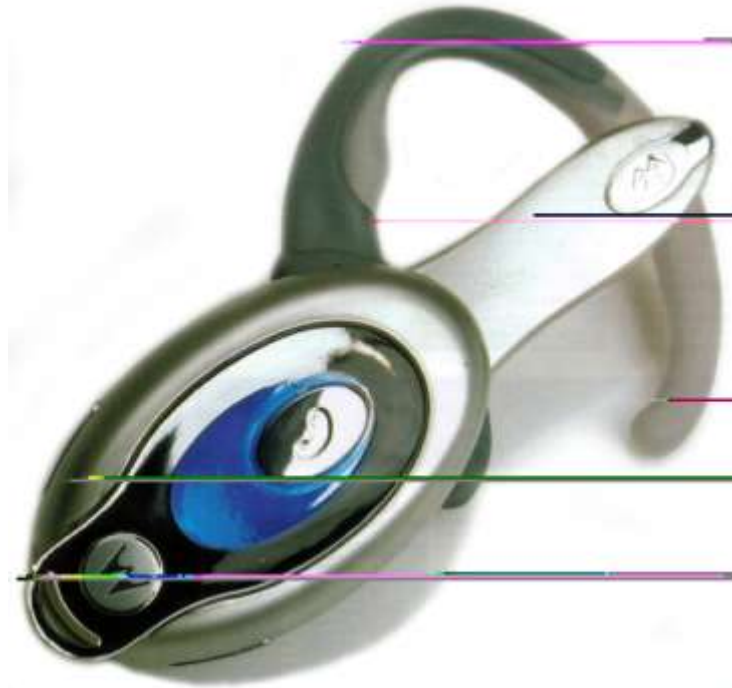


[Brunata A/S]

New product design

- Plastic design
- Device layout
- Prototyping
- Testing

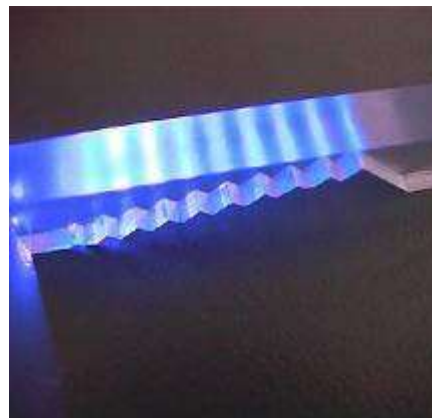




[GN Netcom A/S]

Headset optics

- Design of blue lamp
- Optical experiments
- Rapid prototyping
- Short term development

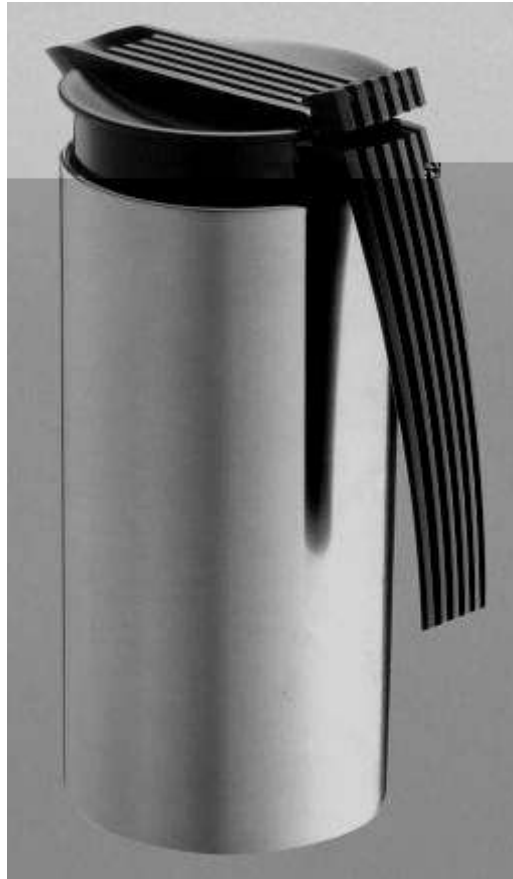




[Danionics A/S]

Lithium-ion battery

- Design of plastic casing
- DFM
- Production run-in
- Design manual



[A/S Stelton]

High vacuum station

- Review
- Redesign of product
- Development of production equipment
- Manufacturing of machine
- Run-in

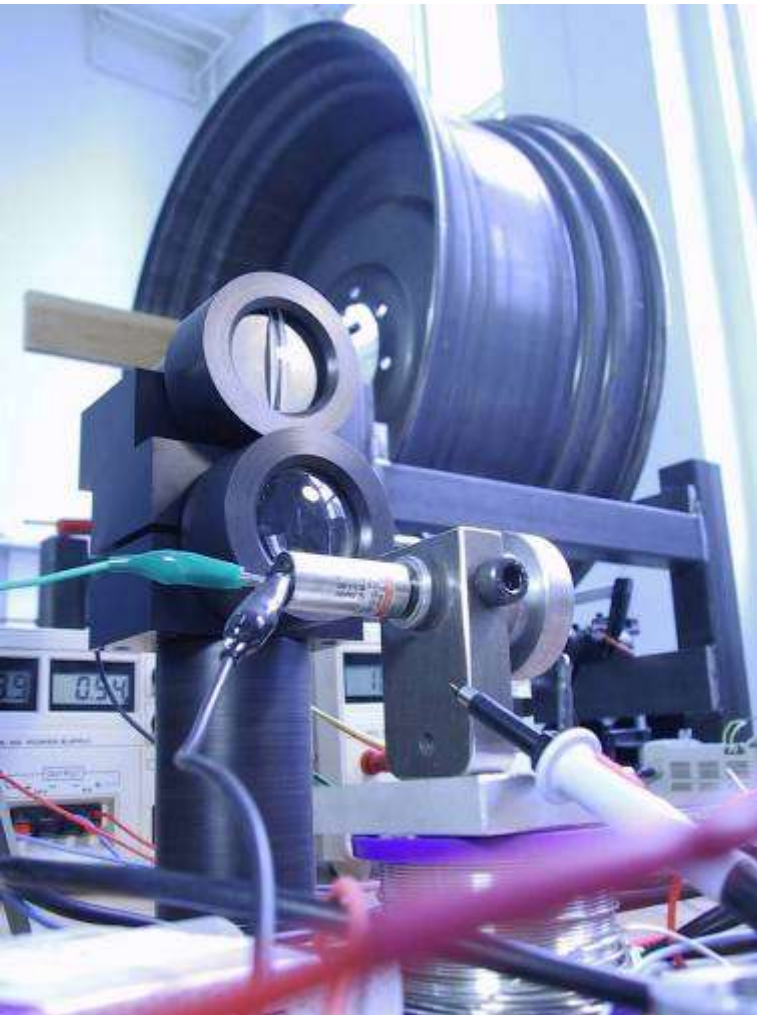


[Junckers Industrier A/S]

Wood2C

- Detection and sorting of cracks in wooden staves
- IR based vision system
- Image processing
- 2C owns IPR





[GKN Wheels Nagbøl A/S]

Measuring machine

- Unique measuring concept
- 2C laser optics and standard optical components
- Full automatic handling
- 2C owns IPR





[Savcor A/S]

Punch vision machine

- Unique design
- Design and manufacturing
- LabView programming
- Production run-in



[GN Otometrics A/S]

Goggle VG40

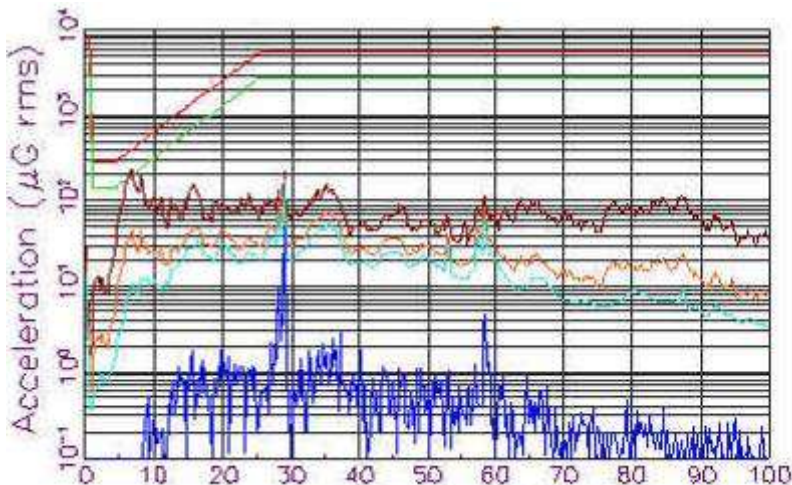
- Project management
- Problem solving
- Subsuppliers contact
- Quality Control



[Brüel & Kjær Vibro A/S]

Vibration monitoring

- Portfolio management
- Project management
- New technology exploitation
- New applications

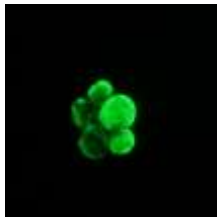


Brüel & Kjær Vibro

Support on new technologies

- Support
 - Co-financing
 - Common projects
 - Co-operation
 - Solutions in subsidiary companies
-
- Students from Technical Universities

Efficient Cancer Diagnostics

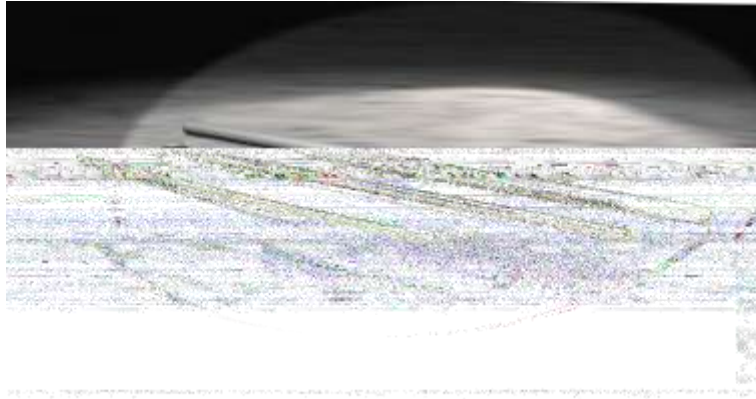


[CytoTrack ApS]

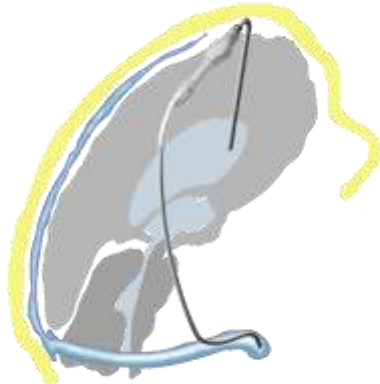
Solid state cytometer

- Functional model
- LabView programming
- Laser optics
- Instrumentation
- Testing

Medical Implant for Brain Surgery



Sinu hunt®



A shunt system for Hydrocephalus
from the brain til Sinus Siggitalis

- Modification on product
- New geometry
- New surface treatment
- Production
- Clinical testing