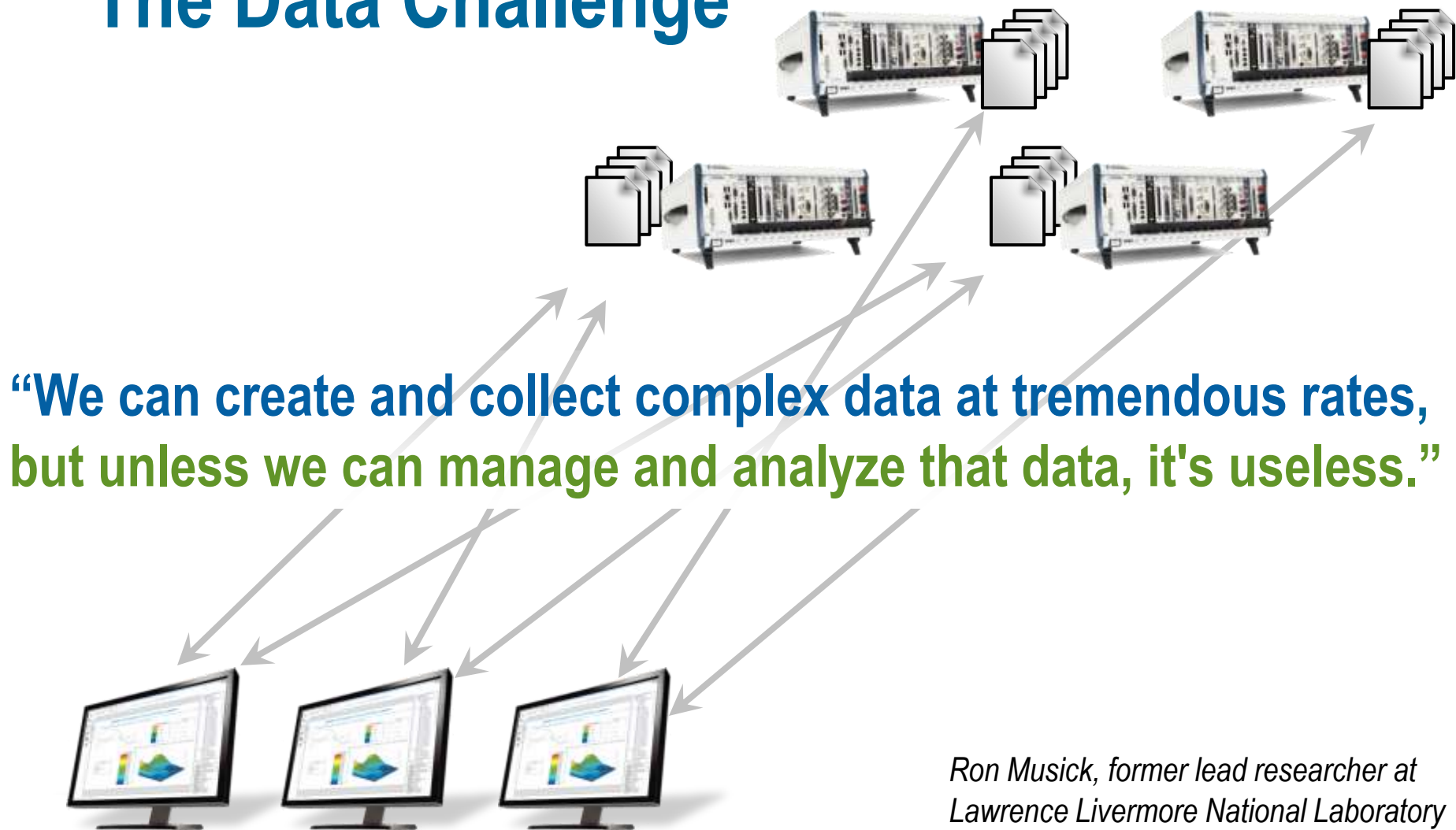


DATA MINING TECHNIQUES FOR LABVIEW USERS

The Data Challenge



*Ron Musick, former lead researcher at
Lawrence Livermore National Laboratory*

The Data Management Workflow

Save data

Find data

Process data

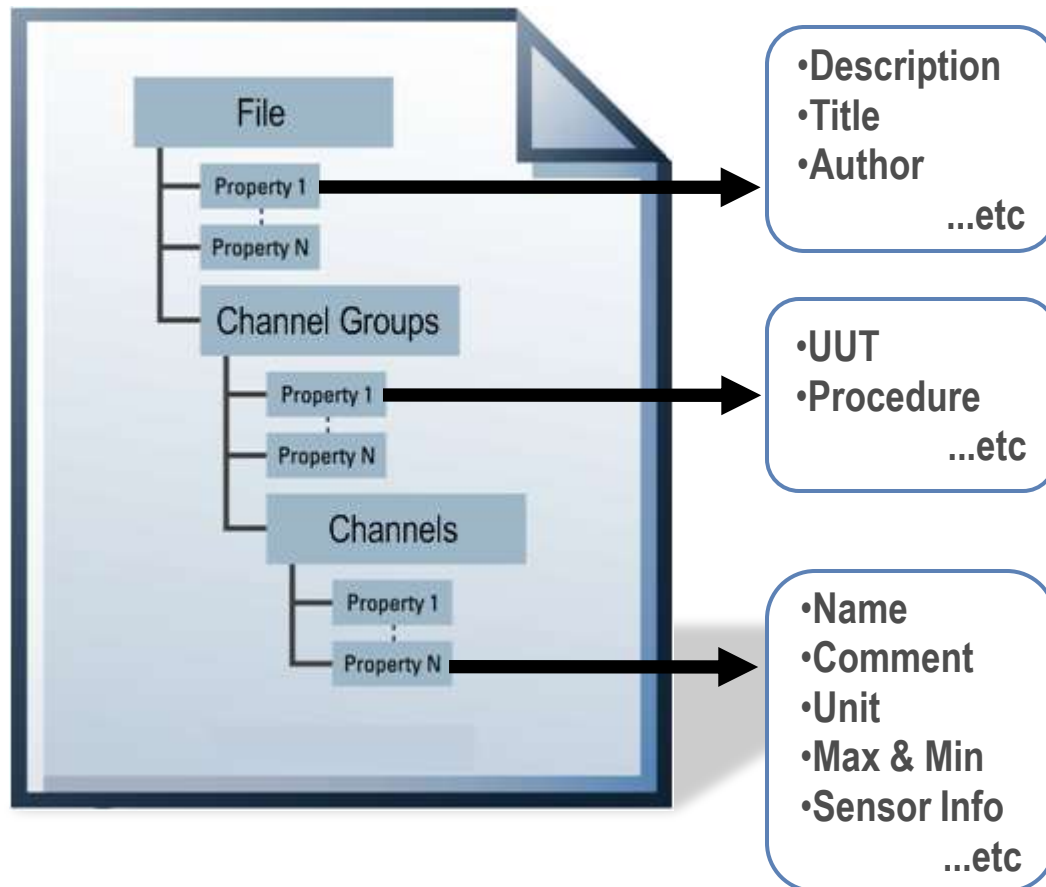
The Data Management Workflow

Save data

Find data

Process data

TDMS File Format

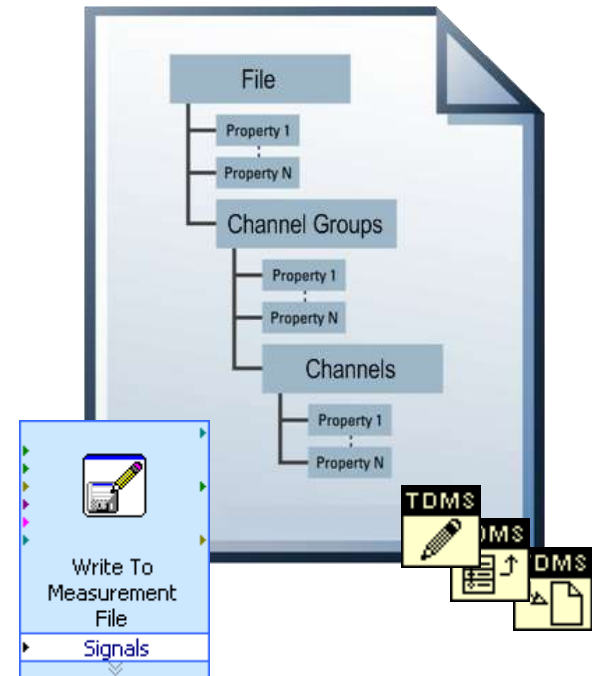


- 3 levels of hierarchy for better organization
 - File, Groups and Channels
- Customizable, descriptive properties at each level

TDMS File Format



- **Simple:** Easiest approach for storing measurement data in NI software
- **Flexible:** Add custom attributes to every file, channel group and channel
- **Fast:** No faster way to stream data than with TDMS and DAQmx 9.0
- **Open:**
 - Microsoft Excel and Open Office Add-In
 - Public documentation
 - C DLL for creating files in 3rd party applications



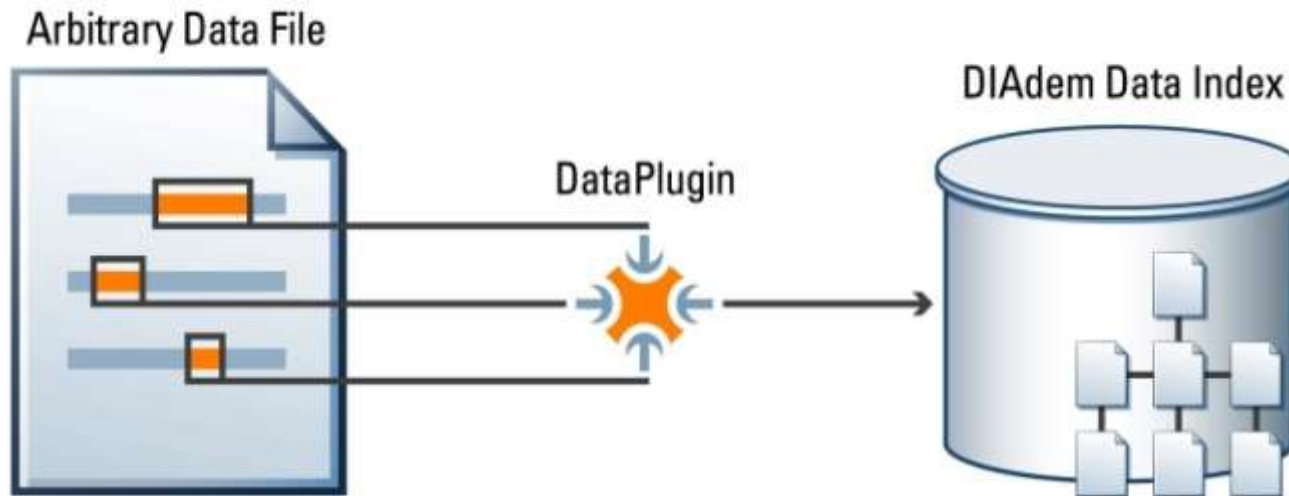
The Data Management Workflow

Save data

Find data

Process data

NI DataFinder Technology



- Stores descriptive information from data files
- Works with **any** data file using free DataPlugins*
- Builds and scales automatically
- Requires no IT support to install, configure or maintain

*visit www.ni.com/dataplugins

The Data Management Workflow

Save data

Find data

Process data

Save data

Find data

Process data

NI DIAdem

Process your data using software designed with engineers in mind

Ready to use data search
and mining

Easy, flexible access to
databases and files

Interactive analysis and
report generation

Automation through VBScript

Additional Resources

- ni.com/data_management
- ni.com/tdms
- ni.com/diadem

