



ENGINEER
NEXT
NIDays

The logo is centered on a blue background with diagonal stripes. It features the words "ENGINEER" and "NEXT" in a large, white, sans-serif font, stacked vertically. A yellow graphic element, resembling a stylized 'X' or a folded ribbon, is positioned between the two words. Below "NEXT" is a white rectangular box containing the text "NIDays" in a smaller, white, sans-serif font. The entire logo is tilted at an angle, matching the background stripes.

Managing Deployed and Distributed Systems

NI SystemLink EAR

Dr. Fabian Wehnekamp

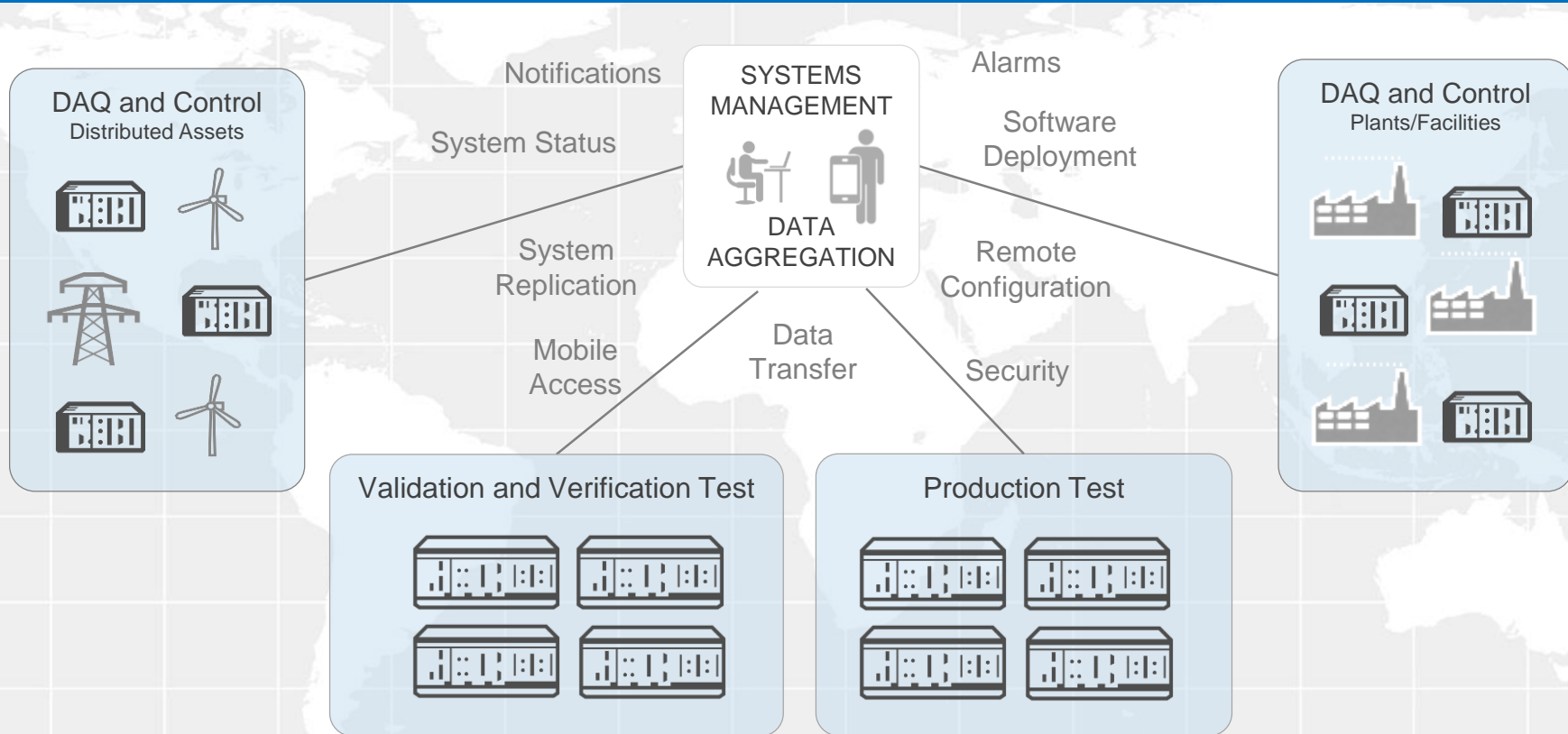
Applications Engineer

Agenda

- Introduction and Product Overview
- Demonstrations:
 - Systems Management
 - Data Communications
- Product Roadmap
- Release Outlook

Challenge: Managing Deployed Systems

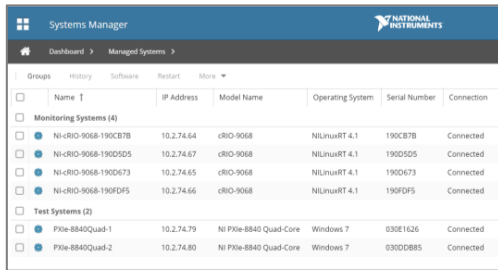
Customers with distributed systems often encounter challenges in the management of devices, software, and data



SystemLink™

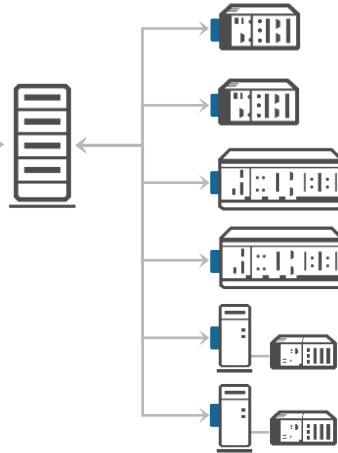
EARLY ACCESS RELEASE

Manage distributed systems with web application software that enables mass software deployment, device management, and data communications.



The screenshot shows the 'Systems Manager' web interface with a table of connected systems. The table has columns for Name, IP Address, Model Name, Operating System, Serial Number, and Connection. It lists two groups: 'Monitoring Systems (4)' and 'Test Systems (2)'. Each group contains two entries with details like IP, model (cRIO-9068), OS (NI Linux RT 4.1), and serial number.

	Name	IP Address	Model Name	Operating System	Serial Number	Connection
Monitoring Systems (4)						
<input type="checkbox"/>	NI-cRIO-9068-190C87B	10.2.74.64	cRIO-9068	NI Linux RT 4.1	190C87B	Connected
<input type="checkbox"/>	NI-cRIO-9068-190D5D5	10.2.74.67	cRIO-9068	NI Linux RT 4.1	190D5D5	Connected
<input type="checkbox"/>	NI-cRIO-9068-190D673	10.2.74.65	cRIO-9068	NI Linux RT 4.1	190D673	Connected
<input type="checkbox"/>	NI-cRIO-9068-190DFD5	10.2.74.66	cRIO-9068	NI Linux RT 4.1	190DFD5	Connected
Test Systems (2)						
<input type="checkbox"/>	PXIe-8840Quad-1	10.2.74.79	NI PXIe-8840 Quad-Core	Windows 7	030E1626	Connected
<input type="checkbox"/>	PXIe-8840Quad-2	10.2.74.80	NI PXIe-8840 Quad-Core	Windows 7	030DDB85	Connected



- Track and manage a group of connected systems
- Gain application access via web browser or mobile
- Install on premise or with a cloud service provider

PRODUCT FEATURES



DEVICE MANAGEMENT

Register hardware targets and classify systems through a shared interface.



SOFTWARE CONFIGURATION

Deploy software to multiple remote targets with upgrade, downgrade, and uninstall.

New module available in early 2018



SYSTEM HEALTH MANAGEMENT

Track and manage hardware health with alarms and notifications.

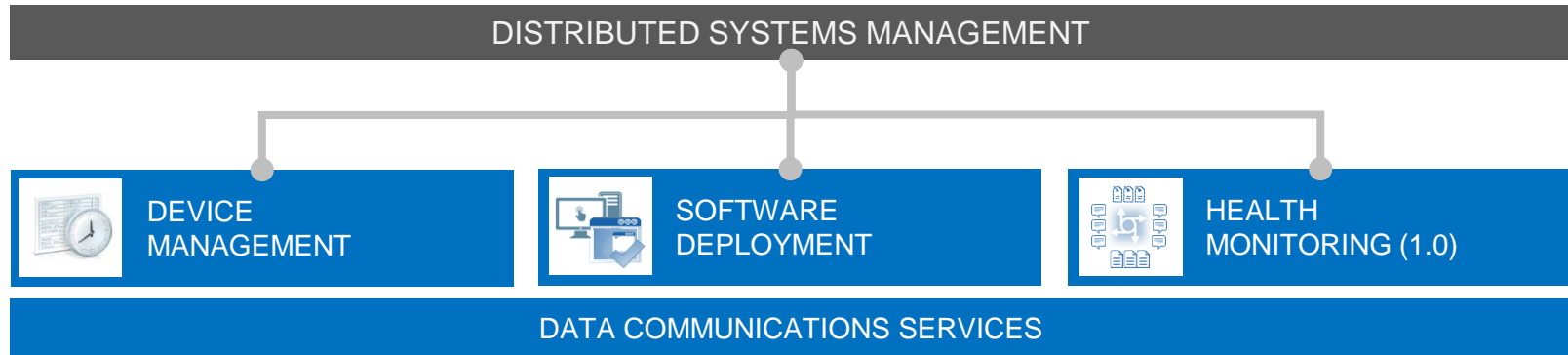


DATA COMMUNICATIONS

Automate data transfer among connected nodes using LabVIEW or web APIs.

SystemLink™ Capabilities

Achieve centralized administration and efficient management of devices, software, and data.



Aligned with enterprise standards and IoT best practices

Device Management

View and manage detailed system and device information

Search systems
across all groups

Track systems
through a central
web interface

Classify systems
into groups

Multiselect to
perform remote
functions in parallel
(e.g., install, restart)

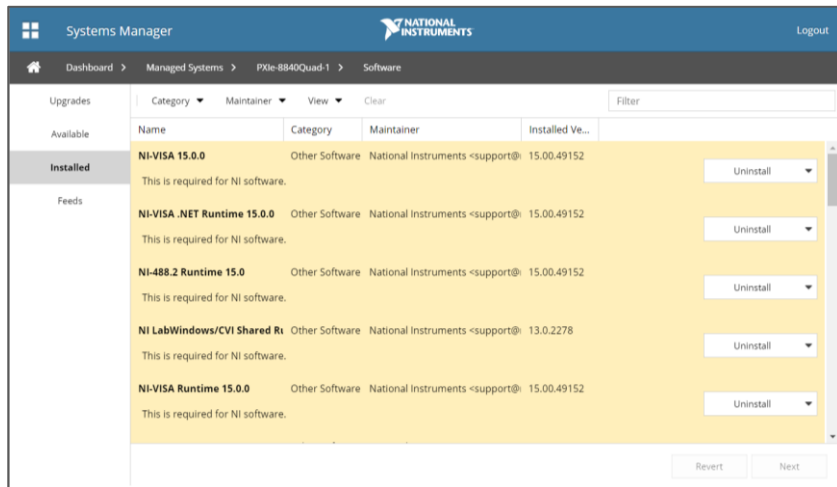
<input type="checkbox"/>	Name	IP Address	Model Name	Operating System	Serial Number	Connection	Comments
Automated Test Systems (2)							
<input type="checkbox"/>	PXIe-8840Quad-1	10.2.74.79	NI PXIe-8840 Quad-Core	Windows 7	030E1626	Connected	Test Station 1
<input type="checkbox"/>	PXIe-8840Quad-2	10.2.74.80	NI PXIe-8840 Quad-Core	Windows 7	030DDB85	Connected	Test Station 2
Control Systems (4)							
<input checked="" type="checkbox"/>	NI-cRIO-9068-190CB7B	10.2.74.64	cRIO-9068	NI LinuxRT 4.1	190CB7B	Connected	Test Cell 1
<input checked="" type="checkbox"/>	NI-cRIO-9068-190D5D5	10.2.74.67	cRIO-9068	NI LinuxRT 4.1	190D5D5	Connected	Test Cell 2
<input checked="" type="checkbox"/>	NI-cRIO-9068-190D673	10.2.74.65	cRIO-9068	NI LinuxRT 4.1	190D673	Connected	Test Cell 3
<input checked="" type="checkbox"/>	NI-cRIO-9068-190FDF5	10.2.74.66	cRIO-9068	NI LinuxRT 4.1	190FDF5	Connected	Test Cell 4

Software Deployment

Deploy software installs and updates

- ✓ LabVIEW applications
- ✓ NI drivers
- ✓ Non-NI software
- ✓ Supporting libraries, docs

- Mass deploy software to a group of systems simultaneously
- Update software at a component level
- Install with dependency awareness and install only the software necessary
- Manage version history to allow restoration to a previous software version



SystemLink™
Server



CompactRIO
(NI Linux Real-Time)



Install App

EXE

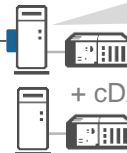
PXI (Windows)



Update Driver

Driver

Windows PC



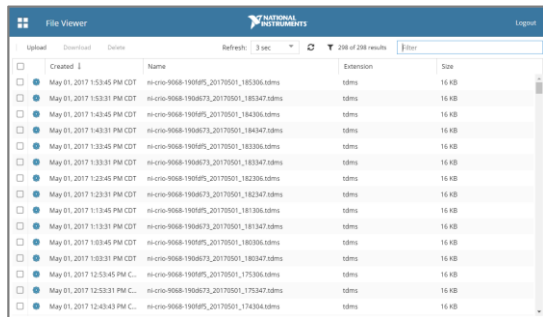
Update App

EXE

Data Communication

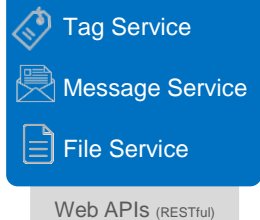
Automate and manage data transfer throughout distributed systems

Data Viewers for Files and Tags

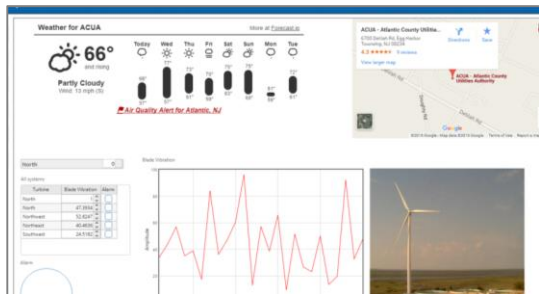


Created	Name	Extension	Size
May 01, 2017 1:53:45 PM CDT	ni-cro-9068-1908f5_20170501_185306.adms	adms	16 KB
May 01, 2017 1:53:31 PM CDT	ni-cro-9068-1908f5_20170501_185347.adms	adms	16 KB
May 01, 2017 1:43:45 PM CDT	ni-cro-9068-1908f5_20170501_184306.adms	adms	16 KB
May 01, 2017 1:43:31 PM CDT	ni-cro-9068-1908f5_20170501_184347.adms	adms	16 KB
May 01, 2017 1:33:45 PM CDT	ni-cro-9068-1908f5_20170501_183306.adms	adms	16 KB
May 01, 2017 1:33:31 PM CDT	ni-cro-9068-1908f5_20170501_183347.adms	adms	16 KB
May 01, 2017 1:23:45 PM CDT	ni-cro-9068-1908f5_20170501_182306.adms	adms	16 KB
May 01, 2017 1:23:31 PM CDT	ni-cro-9068-1908f5_20170501_182347.adms	adms	16 KB
May 01, 2017 1:13:45 PM CDT	ni-cro-9068-1908f5_20170501_181306.adms	adms	16 KB
May 01, 2017 1:13:31 PM CDT	ni-cro-9068-1908f5_20170501_181347.adms	adms	16 KB
May 01, 2017 1:03:45 PM CDT	ni-cro-9068-1908f5_20170501_180306.adms	adms	16 KB
May 01, 2017 1:03:31 PM CDT	ni-cro-9068-1908f5_20170501_180347.adms	adms	16 KB
May 01, 2017 12:53:45 PM C.	ni-cro-9068-1908f5_20170501_175306.adms	adms	16 KB
May 01, 2017 12:53:31 PM C.	ni-cro-9068-1908f5_20170501_175347.adms	adms	16 KB
May 01, 2017 12:43:43 PM C.	ni-cro-9068-1908f5_20170501_174306.adms	adms	16 KB

SystemLink™
Server



Custom Web Applications



Tags



CompactRIO
(NI Linux Real-Time)

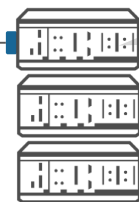
Messages | Files



Messages



PXI (Windows)

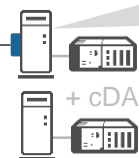


Tags | Files

Files



Windows PC

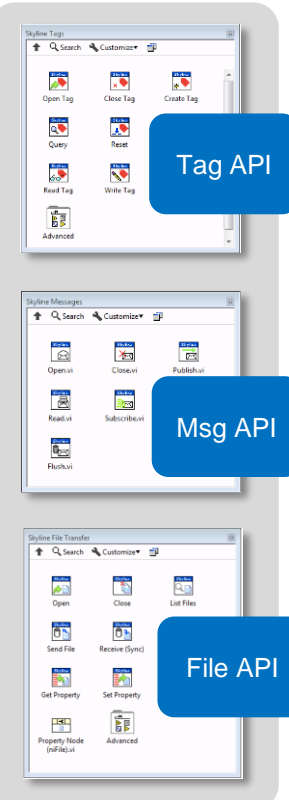


Tags | Messages



LabVIEW APIs

Supports LabVIEW 2014+



The registered trademark Linux® is used pursuant to a sublicense from LMI, the exclusive licensee of Linus Torvalds, owner of the mark on a world-wide basis.

SystemLink™ Architecture



Open and Extensible

APIs for LabVIEW and web services

Compliance with several open-source standards



Cloud-Ready

Installation on premise or in the cloud

Cloud-centric developments on the horizon



Optimized for Distributed Nodes

System functions execute in parallel

Targets, server, and users can be on multiple networks



Secure

Data communications are encrypted via TLS

Secure user access: LDAP and AD integration

SystemLink™ Early Access Release (EAR)



Why Early Access?

- Start adding value for customers
- Allow time for NI software to migrate to packages
- Allow NI to limit marketing and focus on first wave of customers

Notable Package Limitations

- CompactRIO driver not in package format for deployment
- TestStand has limited options for deployment
- Support expanded in both cases in 2018

EAR Customer Benefits

Why should I get involved early?

- Product roadmap influence
- Unique access to product leadership (R&D and product management)
- Ability to deliver value to your business and establish competitive differentiation
- Product quality criteria is similar to the general release

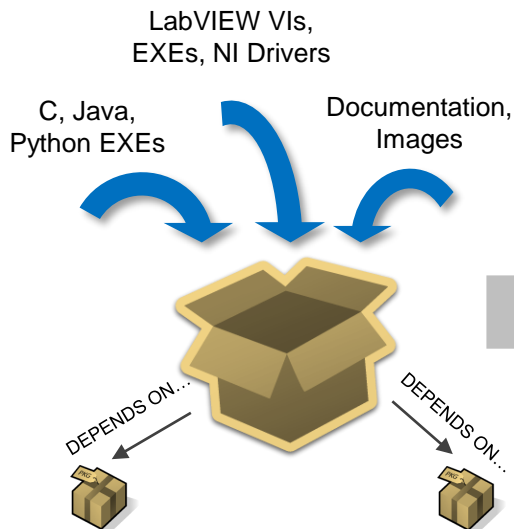
Handling Software Downloads

Software Deployment Process

Integration with package management framework

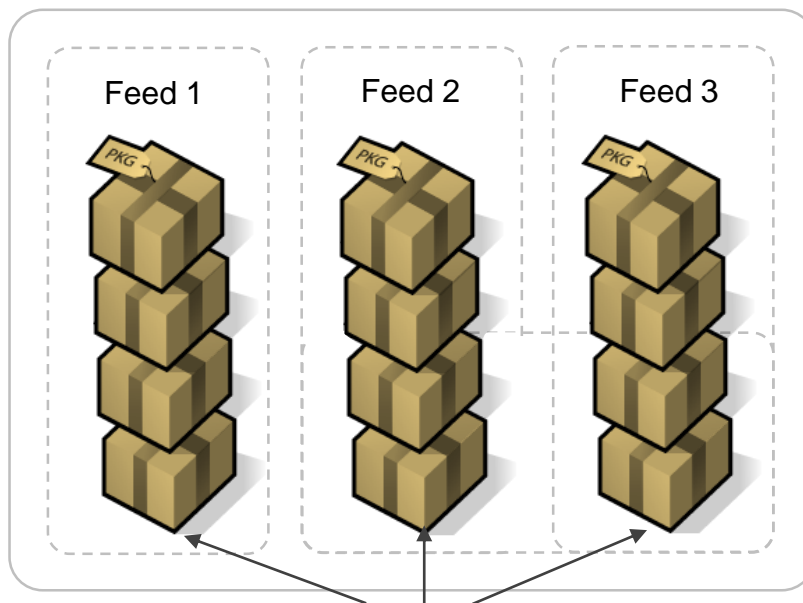
CREATE PACKAGES

A standard container framework for distributing and installing software



UPLOAD TO REPOSITORY

A central location to store software packages for distribution to hardware; typically the SystemLink™ server

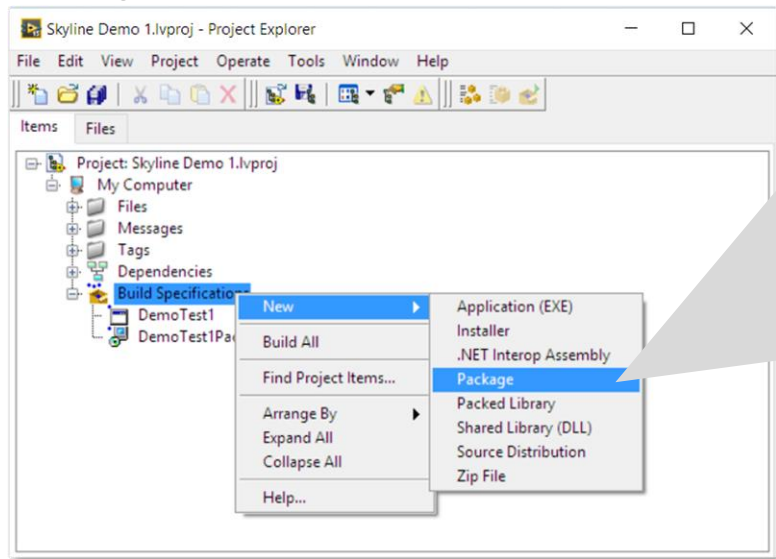


Feeds: Virtual collections of packages to associate with hardware targets

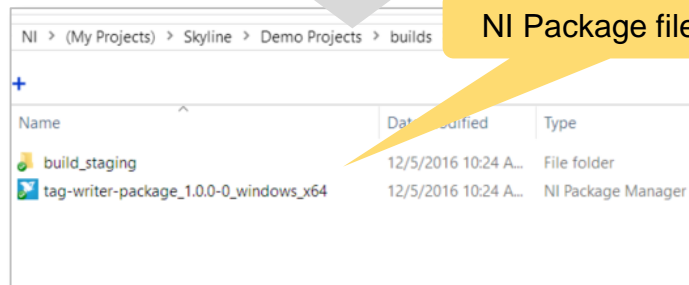
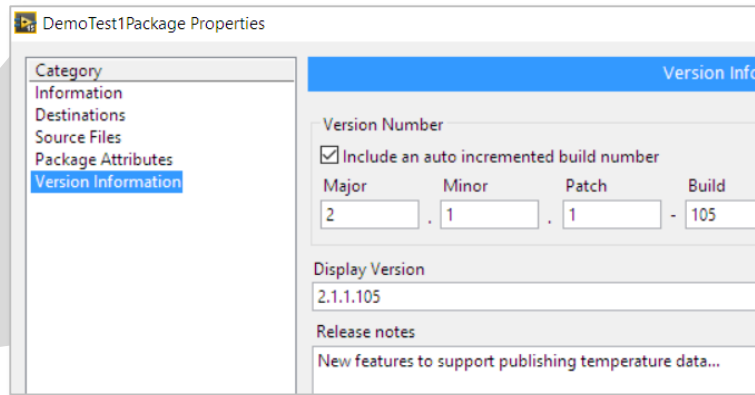
Software Deployment

Creating packages

Package creation from LabVIEW:



An “NI Package” is created as a LabVIEW build specification

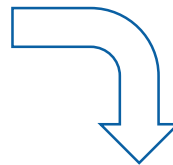


NI Package file on disk

A command-line interface is also available for package creation.

Mass Deployment of Software

Systems Manager					
Dashboard > Managed Systems > Software (NI-cRIO-9068-190CB7B, NI-cRIO-90...					
Summary	Filter				
System Name	IP Address	Created	Last Updated	Pending Status	
NI-cRIO-9068-190CB...	10.2.74.64	June 27, 2017 5:25:59 PM CDT	June 27, 2017 5:25:59 PM CDT	Installing software	
NI-cRIO-9068-190D5...	10.2.74.67	June 27, 2017 5:25:59 PM CDT	June 27, 2017 5:25:59 PM CDT	Installing software	
NI-cRIO-9068-190D6...	10.2.74.65	June 27, 2017 5:25:59 PM CDT	June 27, 2017 5:25:59 PM CDT	Installing software	
NI-cRIO-9068-190FD...	10.2.74.66	June 27, 2017 5:25:59 PM CDT	June 27, 2017 5:25:59 PM CDT	Installing software	



Systems Manager					
Dashboard > Managed Systems > Software (NI-cRIO-9068-190CB7B, NI-cRIO-90...					
Filter					
Summary	Filter				
System Name	IP Address	Created	Last Updated	Pending Status	
NI-cRIO-9068-190CB...	10.2.74.64	June 27, 2017 5:25:59 PM CDT	June 27, 2017 5:26:03 PM CDT	✓ Software installation succeeded	
NI-cRIO-9068-190D5...	10.2.74.67	June 27, 2017 5:25:59 PM CDT	June 27, 2017 5:26:03 PM CDT	✓ Software installation succeeded	
NI-cRIO-9068-190D6...	10.2.74.65	June 27, 2017 5:25:59 PM CDT	June 27, 2017 5:26:03 PM CDT	✓ Software installation succeeded	
NI-cRIO-9068-190FD...	10.2.74.66	June 27, 2017 5:25:59 PM CDT	June 27, 2017 5:26:03 PM CDT	✓ Software installation succeeded	

Architecture

Open-Source Technology

SystemLink™ incorporates best-in-class, open-source software technology

Web UI Framework



JavaScript application design

Message Bus

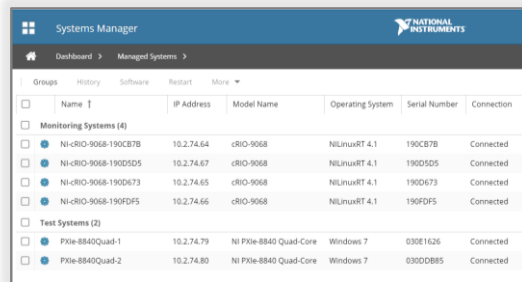


Centrally brokered messaging

Remote Configuration

SALTSTACK

Remote execution engine



Groups	Name	IP Address	Model Name	Operating System	Serial Number	Connection
Monitoring Systems (4)						
<input type="checkbox"/>	Ni-cRIO-9068-190CB7B	10.2.74.64	cRIO-9068	NiLinuxRT 4.1	190CB7B	Connected
<input type="checkbox"/>	Ni-cRIO-9068-190D5D5	10.2.74.67	cRIO-9068	NiLinuxRT 4.1	190D5D5	Connected
<input type="checkbox"/>	Ni-cRIO-9068-190D673	10.2.74.65	cRIO-9068	NiLinuxRT 4.1	190D673	Connected
<input type="checkbox"/>	Ni-cRIO-9068-190DFD5	10.2.74.66	cRIO-9068	NiLinuxRT 4.1	190DFD5	Connected
Test Systems (2)						
<input type="checkbox"/>	PXIe-8840Quad-1	10.2.74.79	Ni PXIe-8840 Quad-Core	Windows 7	030E1626	Connected
<input type="checkbox"/>	PXIe-8840Quad-2	10.2.74.80	Ni PXIe-8840 Quad-Core	Windows 7	030DDB85	Connected



System & Data Security
User Authentication
Data Processing

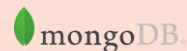
Client
Communication



Web Server



Database



In-Memory Cache



Supported Platforms

SystemLink Server



Windows Server

- Windows Server 2008 R2, SP1
- Windows Server 2012 R2
- Windows Server 2016



Windows PC

- Windows 7+

SystemLink Clients (Targets)



NI PXI

- Windows 7+



CompactRIO

- NI Linux RT 2017



Windows PC

- Windows 7+



LabVIEW

- 2014–2017 (32-bit and 64-bit)

Real-Time Module

- 2017

LabVIEW NXG

- 2.0 (end of year)

Note: Windows Server and targets must be 64-bit OS.

Software Roadmap

Roadmap

Expanded Deployment

- CompactRIO driver
- LabVIEW RT run time
- TestStand

Deployment Enhancements

- Deployment schedules
- Install and process prioritization
- Job queues for online/offline

System Asset Management

- Utilization reporting
- Inventory and audit history
- Configuration reporting

2018

System Health Management

- Alarms | notifications
- Status and trend
- Visualization

Access and Permissions

- By system node
- By data object (tag/file)

2017

Cloud Marketplace

- Amazon AWS
- Microsoft Azure

2018

Tag Data Visualization

- Standard UI controls
- No programming required

Demonstration

Stay Connected



ni.com/niweekcommunity



facebook.com/NationalInstruments



twitter.com/niglobal



youtube.com/nationalinstruments

You do have Questions? Or need more Information?



Always talk to...



NI Staff

OR: Leave a message...

Please add your name, check your request and give it to the event staff:

Company: _____ Full Name: _____
Mobile Phone: _____ Email: _____

Need a call, visit, quote or solution?

☐ Call ☐ Visit ☐ Quote ☐ Solution

Notes: Please leave your comments or specific requirements here, thanks!

If filled out by the customer: I have been informed about and I agree to the processing (including transfer to the US) of my data by National Instruments for the purposes and under the circumstances specified in this privacy statement that is contained in document of which this document is part. I understand that upon submitting my data, I will receive periodic emails about products, services, events, training and that I can change my e-mail settings at any time.

©2017 National Instruments. All rights reserved. National Instruments, NI, ni.com, and NI-Power are trademarks of National Instruments. Other product and company names listed are trademarks or trade names of their respective companies. 2017-01

NATIONAL INSTRUMENTS

