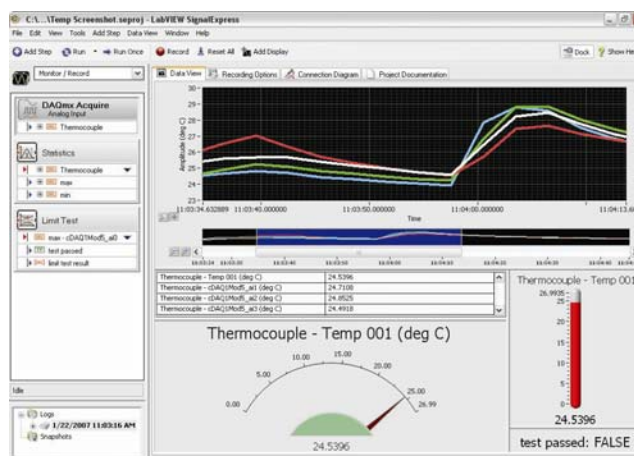


# NI LabVIEW SignalExpress for Data Logging

## Quickly Create Data-Logging Systems

National Instruments LabVIEW SignalExpress, the newest addition to the LabVIEW family, is interactive measurement software for acquiring, analyzing, and presenting your data without programming. The software provides a fast, simple way to configure data-logging applications for tasks such as data visualization, analysis, and alarming in addition to the acquisition and logging of data. You also can generate LabVIEW graphical programming code with a single mouse click in LabVIEW SignalExpress to create original user interfaces or add custom logic for more advanced, customizable data-logging applications.



## LabVIEW SignalExpress Data-Logging Features

Feature	Description
Automatic device detection	Use LabVIEW SignalExpress to automatically detect National Instruments USB data acquisition devices for quick setup. With just a couple of mouse clicks, the software automatically configures the devices and begins acquisition, delivering measurements in a matter of seconds.
Drag-and-drop data view	Visualize acquired data by simply dragging and dropping the data onto a graph or chart. You also can view data using a variety of devices such as LabVIEW thermometers, gauges, meters, and LEDs.
One-button data logging	Press the record button and select the channels to record to begin streaming data to disk. All data is saved in the Technical Data Management Streaming (TDMS) file format for highly optimized data streaming and searchability.
Conditional logging and alarming	Configure LabVIEW SignalExpress to start and stop acquiring data based on preconfigured times or data events. You also can set up the software to notify operators of certain conditions such as a threshold that has been passed or a test failure and perform custom events based on the outcome.
Signal processing and data analysis	Perform live and offline analysis for common signal processing and data analysis tasks.
Interactive reports	Create customized reports by dragging and dropping graphs and text. You also can send reports directly to the printer or open them in any Web browser.
Automatic LabVIEW code generation	Convert your LabVIEW SignalExpress projects to graphical code to create custom user interfaces, add custom logic, or perform additional analysis and processing.

For more information on LabVIEW SignalExpress for data logging, visit [ni.com/labview/signalexpress/daq.htm](http://ni.com/labview/signalexpress/daq.htm).

© 2007 National Instruments Corporation. All rights reserved. LabVIEW, National Instruments, NI, ni.com and SignalExpress are trademarks of National Instruments. Other product and company names listed are trademarks or trade names of their respective companies.



11500 N Mopac Expwy • Austin, TX 78759-3504 USA  
Tel: (800) 433-3488 • Fax: (800) 683-9300  
info@ni.com • ni.com